



*Wayne County*  
**COMMUNITY FOUNDATION**  
SHARING YOUR LIFE WITH SOMEONE YOU MAY NEVER MEET®

Lighting the Way for Philanthropy

---

*Annual Report 2017-2018*



## *Year in Review*

- Total gifts \$14,181,976
- 1,937 individual gifts
- 29 new funds
- 422 funds in total
- \$77.2 million in total assets
- \$5,757,764 in grants and scholarships awarded
- 1,060 grants and scholarships awarded
- Over \$72 million in grants and scholarships awarded since 1978



# Letter to Our Community

## *Dear Friends,*

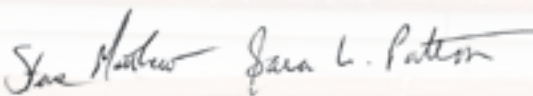
Birthdays are occasions for looking back while also thinking ahead. As your Wayne County Community Foundation marks its 40th anniversary this year, we have a lot to celebrate! The Foundation's growth—from 1978 when it was started with a single gift of \$1,000—to assets under management in excess of \$77 million today, is simply remarkable. This success is due to the uncommon generosity of thousands of Wayne County citizens who have chosen to make philanthropy a vibrant part of their lives.

Even more significant than assets held by the Foundation is the amount of money given back to the community in the form of grants and scholarships: more than \$72 million since 1978—proof positive that our donors have a major impact on the quality of life in our area.

As we look back on 40 years of history, we are really celebrating you: the citizens, businesses, and service agencies of Wayne County who have steadfastly supported the Foundation's growth and development.

This report offers insights on the past 40 years of WCCF's history and also highlights opportunities as we look to the future. We hope it will inspire you to consider how you might help to write the next chapter in the life of the Foundation by supporting the causes you care about while building a lasting legacy of giving.

*Your confidence in the Foundation inspires us every day. Come see us!*



**Steve Matthew**  
President,  
Board of Trustees

**Sara L. Patton**  
Executive Director



# Historical Perspective



J.C. Johnston III, trustee, with a photo of Bob Critchfield. Both men have been instrumental to the founding and growth of the Foundation.

## *J.C. Johnston III, present at the creation, reflects on how the Foundation began*

*So often, getting off to a good start is important. This was true for the Wayne County Community Foundation.*

Robert L. “Bob” Critchfield, Sue Crawford, and Robert C. Seiwert constituted the steering committee to study how to establish a community foundation in Wayne County. Sue Crawford, however, did most of the detail work for the committee and kept the project focused and on schedule. As part of her work, Sue visited and interviewed a number of community foundations then organized in Ohio. Many were considerably larger and there was some concern that Wayne County, then with a population of less than 88,000, would be too small to sustain a community foundation.

The committee could not have done better than to have Bob Critchfield leading this effort. Bob was one of the best known business leaders in Wayne County, the senior partner of the law firm that bore his family’s name, and was known throughout Ohio and in New York City as a good person to know if you were looking for sound advice and great connections in the business world. Bob was then serving on the Board of

Directors of Rubbermaid Incorporated, Diebold Inc. and Premier Industrial Corporation; all public companies traded on the New York Stock Exchange. An astute investor in businesses and harness horse racing, Bob had established his own private foundation and so recognized the utility of the tax-exempt foundation to further his support of charities such as The College of Wooster where Bob served as a Trustee and had established the “Robert Critchfield Chair of English History”.

In the Fall of 1978, the steering committee proceeded with plans to start a community foundation which would be a public foundation. On December 6, 1978, Articles of Incorporation were filed with the Secretary of the State of Ohio creating a not-for-profit corporation then known as the “Greater Wayne County Foundation.”

The steering committee morphed into an organizational committee with Bob Critchfield as Chairperson. This committee wisely cast the new foundation as one with representation on its governing board from all four corners of Wayne County as well as its cities. (Founding members of the Board of Trustees are listed on



The little red caboose, located in Smithville, Ohio, served as the Foundation's first office. Bill Baer of Orrville, Ohio, made the first gift to the Foundation.

page 47 of this report.) Bob Seiwert took on the role of Executive Director. His office was the "little red caboose" located in Smithville, clearly signaling that the foundation was truly a county-wide resource.

William (Bill) Baer made the first gift to the Foundation in 1979, a check for \$1,000 from Will-Burt Corporation in Orrville. Bob Critchfield followed that with his own gift of \$1,000.

Despite the small size of Wayne County, Bob believed that with the right leadership, local citizens could sustain a broad-based community foundation. He was also willing to lead by example. In 1979, Bob set about to transfer to the Foundation a significant part of the investment assets of his Critchfield Foundation.

With funds available to spend for promotional materials, Sue Crawford designed the first marketing products for the newly formed Foundation, among these a trifold pamphlet which the Board of Trustees distributed to all the financial institutions in Wayne County.

By 1980, Bob's gifts to the young Foundation constituted nearly 70 percent of its assets.

There was some concern that Bob's generosity would cause the Foundation to look like a private foundation rather than the public foundation it is. Trustee meeting minutes recorded a challenge gift that Bob made to terminate his private foundation and pour its financial assets over to the Foundation in order to encourage more gifts from the community to match his contributions. Following Bob's untimely death in 1981, the balance of the investment portfolio of the Critchfield Foundation was given to the Foundation.

With the exception of a construction project, it would be more than ten years until the total received from Bob and his Critchfield Foundation were exceeded by another donor. In 1990, the Foundation's assets under management reached the one million dollar mark. In 1995, it received its first million dollar gift and assets under management neared 10 million dollars.

With gifts made through planned giving leading the way, the Foundation's assets have continued to grow (as illustrated on page 39). Bob Critchfield's gifts set the Foundation on its way to becoming what is now an organization exceeding 77 million dollars in assets.



## *Meeting ever-changing community needs.*

Since our founding in 1978, visionary donors have been making gifts and creating funds to address the community's most pressing needs. When you establish an unrestricted fund with Wayne County Community Foundation, your gift enables the Foundation to address a wide range of ever-changing community issues —including future needs that often cannot be anticipated at the time your gift is made.

Created by civic-minded individuals as a primary source of grants to address emerging needs in our community, Community Funds support organizations and initiatives through the competitive grants process. The Foundation thoroughly examines the nonprofit applicants to understand the need and capacity of the program before distributing funds. The flexibility of your unrestricted gift enables your Community Foundation's Board of Trustees to respond to the community's most pressing needs, today and tomorrow.

Grants are made in the name of the fund you establish, creating your personal legacy of giving. You may fund your gift immediately or through your will or other estate planning strategy. If you want to help Wayne County and its residents thrive, and to make the greatest impact possible with your charitable dollars – now and for many years to come – a Community Fund is right for you.



### **A Community Fund is an ideal choice if you want to leave a legacy of thoughtful generosity. Community Funds are:**

#### **Effective**

Grantmaking from your fund reflects the ever-changing needs, ideas, and issues of the citizens of Wayne County, Ohio, creating the greatest impact where it's needed most. Because it has no restrictions, your fund has the potential to support a wide range of charitable programs.

#### **Flexible**

Add to your fund at any time. Once the fund is established, you can add a little or a lot – depending on your philanthropic goals. The Foundation can accept gifts of many types of assets, including stock and real property.

#### **Efficient**

We handle the administrative tasks of philanthropy—from keeping track of gifts and grants to sending you quarterly statements of activity—all for a nominal administrative fee.

#### **Community-Oriented**

You want to help this community and its residents thrive. Our staff dedicates hundreds of hours every year to reviewing and evaluating local nonprofits. All of this information guides the distributions from your fund to ensure that grants are addressing real needs in Wayne County.

# The Power of Endowment

## *Making the most of your giving, forever.*

At the heart of the mission of the Foundation is building endowment to secure the future of Wayne County. We understand the power of permanence. We believe that it's the key to ensuring that our community's future will be even brighter than its past. When you create a charitable fund through the Foundation, you can benefit the community forever with a permanent endowment.

Endowed funds are created so the original gift remains intact but is invested to grow in value. As the fund grows, a portion of the earnings can be granted to public charities. Unlike a contribution that is given and spent on an immediate need, a gift to an endowment (or permanent) fund will give many times its original value through time, making it "a gift that keeps giving." Over time, the value of an endowment fund will be significant both in dollars granted and in fund value.

### A permanent endowment fund carries several advantages. An endowment will:

- Provide dependable, perpetual income to your chosen areas of interest – be it the arts, your house of worship, your alma mater or whatever cause you love
- Carry on your family's name by creating a permanent legacy
- Allow successive generations to continue family giving traditions

Through the Power of Endowment, we build a living legacy that reflects the intentions of those who constructed it. Endowed gifts build lasting financial strength and provide permanent support for the community – helping you do good work today and far into the future.

The following chart illustrating the Power of Endowment is based on an endowed fund established with \$10,000.



Assumes a 6.5% ROI, 1% administrative fee, and 4.5% grant payout each year. This example is not a guarantee of return on investment.

# Your Invitation to Philanthropy



**Jean Baird** arrived in Wooster in 1968 when her husband, Bill, joined the faculty of The College of Wooster. She quickly became an active member of the community, working for the city, serving on numerous nonprofit boards, and volunteering with community organizations. She was best known for her tireless efforts to improve the quality of life in Wooster for everyone. Upon her passing in 2009, the ***Jean Baird Scholarship for the Arts Fund*** was established to support those wishing to explore their artistic abilities at Wayne Center for the Arts.

## *We're here for you*

We're here to help you benefit the charitable causes you're most passionate about. As your partner in philanthropy, we understand that every donor has individual needs and wishes. We will work with you individually and personalize our service to ensure that your philanthropy is effective, personal, meaningful, and fulfilling. You can:

### **Contribute to an Existing Fund**

We'll work with you to ensure that your gift benefits the charitable priorities you're passionate about.

### **Create Your Own Fund**

Our goal is to help you establish the fund that will enable you to fulfill your philanthropic purpose.

### **Leave Your Mark**

Including Wayne County Community Foundation in your estate plan is an easy way to make a long-lasting, meaningful, and significant impact on the community around you.



## Create a Fund

Establishing a fund at Wayne County Community Foundation is an easy and effective way to invest in your community. Listed below are the types of funds available to our donors:

- **Community Funds** – most flexible fund to meet the changing needs of our community.
- **Field of Interest Funds** – support your particular areas of interest.
- **Donor or Corporate Advised Funds** – allow donors to recommend grants to the charitable causes they care about.
- **Scholarship Funds** – support our local students with grants to pursue post-secondary education.
- **Designated Funds** – provide annual grants in perpetuity for one or more organizations of your choice.
- **Agency Funds** – created by charitable organizations to benefit the mission of the organization now and in the future.

We make it easy to establish a charitable fund that meets your personal needs. You sign a simple fund agreement and make your gift to open the fund. Most funds may be opened with a minimum gift of \$10,000; to open a new scholarship, the minimum is \$20,000. Your fund may be created with a current gift, or through a bequest. Our professional staff is ready to meet with you to talk about your goals, and create a plan that matches your charitable interests and financial situation. Whatever your philanthropic goals, we have the flexibility and tools to help you reach them.

---

*Each of our fund types may begin as an Acorn Fund. With their significantly lower minimums, these funds allow for younger families or seniors on fixed incomes to establish legacies on an installment basis. To learn more about establishing your fund at Wayne County Community Foundation, please call 330.262.3877 or email [wccf@sssnet.com](mailto:wccf@sssnet.com).*

---



**Lillian Steiner** was known for her hard work as a volunteer. She spent countless hours serving Wayne County organizations. From church and area schools to the Red Cross and Wooster Community Hospital, Lillian was always willing to lend a hand. In 1986 she joined the Board of Trustees of the Wayne County Community Foundation, bringing with her knowledge of local nonprofits and community needs. She served on the Board until 1994, and her retirement from the Board did not mean the end of her involvement. Through a bequest in 1999, she established the **Lillian Steiner Community Fund** to further the work of the Foundation well into the future. Since then, the Fund has awarded over \$125,000 to the community – while the establishing principal has remained intact and continues to grow.

# Friend of Philanthropy

---



## *Stephen and Cheryl Shapiro*

*When Steve and Cheryl Shapiro first married, they moved to his hometown of Wooster, Ohio. He promised her it was only for a year and then they would be off to the big city. That was nearly 50 years ago; and Wayne County has reaped the benefits of that one broken promise ever since.*

Growing up within the Jewish faith, the idea of philanthropy was instilled in both Steve and Cheryl from a very young age. *Tzedakah*—a Hebrew word often translated as charity—is a mainstay of Jewish life. It means being good stewards of and planning to give a portion of one’s personal substance for the common good. Although it is related to charity, the translation of *tzedakah* is broader—it means righteousness, fairness or justice. In Judaism, giving to the poor is not viewed as a generous act; it is simply an act of justice, the performance of a duty, giving the poor their due. It is the right thing to do.

The Shapiros are passionate about helping at-risk youth and focus on projects that will

remove roadblocks for young people, allowing them to grown into good, productive citizens. Both Steve and Cheryl have served on the Board of Trustees for The Village Network (TVN). Their most recent project was the creation of the *Cheryl and Stephen Shapiro Center for the Expressive Arts* on the Wooster Campus of TVN. The center is an integral part of TVN’s focus on the Neurosequential Model of Therapeutics, which involves training the brains of children and youth to repair the areas in which development was impaired by trauma. The new center offers a state-of-the-art facility for residents to express themselves through art and music.

In addition to The Village Network, where Steve is a Trustee Emeritus, the couple are involved with a number of nonprofit and community organizations. Steve has been an active member of Wooster Rotary and served on numerous boards including Wayne County Community Foundation, Goodwill Industries of Wayne and Holmes Counties, STEPS (now OneEighty, Inc.), Wayne Economic Development Council, and was co-founder of The SPOT, a youth center operated by



Above: The Cheryl and Stephen Shapiro Center for the Expressive Arts on the Wooster Campus of The Village Network.

Right: Artwork created by a participant in TVN's Art Therapy Program.



Wooster YMCA. Cheryl is a Trustee Emerita of Wayne Center for the Arts and a current member of *The Women's Fund*, an affiliate of the Foundation.

Both consider themselves fortunate to have had parents who were strong philanthropic role models, giving whatever they could – whether time, talent, or treasure – an ideal they are passing on to their own children, William, Rachel and Joshua. By establishing the *Stephen and Cheryl Shapiro Family Fund* at the Foundation, they are encouraging their children to be philanthropic and to discover the causes they care about most.

Their advice to others is simple: find the cause you are passionate about and don't wait! Do what you can during your lifetime – whether that is by giving your time or financial resources – and enjoy watching the fruits of your labor flourish.

In establishing the *Friend of Philanthropy*, the Foundation recognizes the difference that individuals can make through personal commitment and leadership, taking into account the impact such individuals have on our community, and the role their creativity and advocacy can play in a project's success. Steve and Cheryl Shapiro exemplify all these qualities, and have repeatedly shared them with the members of this community. We are forever grateful.

### Previous Award Recipients

- Stanley C. & Flo K Gault, 2013
- The J.M. Smucker Family, 2014
- The Donald & Alice Noble Family, 2015
- Greg & Kathy Long, 2016
- Barry Romich, 2017

*The Friend of Philanthropy Award was created to honor those who make a difference in our communities with their philanthropic activities – the giving of time, talent or treasure – for the betterment of the Wayne County area. The award is presented at Wayne County Community Foundation's Annual Dinner. For more details on the award and nomination process, please visit us online at [WayneCountyCommunityFoundation.org](http://WayneCountyCommunityFoundation.org) or call 330.262.3877.*



An Affiliate Fund of the Wayne County Community Foundation

# Empowering Women in Wayne County

The mission of The Women’s Fund is to create a permanent legacy that enhances the lives of women in Wayne County, Ohio. By focusing on three key areas – education, economic empowerment, and health and wellness – the Fund gives more women opportunities to succeed.

A partnership of donors, grantees, and volunteers, the Fund works to improve the lives of women of all ages by directing resources to organizations that empower change and self-sufficiency. The Fund is operated by women, for women.

## The Women’s Fund Advisory Committee

Pat Bare	Glenda Lehman-Ervin
Sally Bernhardt	Kathy Long
Maribeth Burns	Gayle Noble
Marian Cropp	Rachel Relle
Chris Davis	Jenni Reusser
Cheryl Goff	Peggy Schmitz
Diane Gordon	Judy Seaman
Prue Holtman	Cheryl Shapiro
Elizabeth Hooker	Deanna Troutman
Sandra Hull	Yvonne Williams

Designed to prepare and motivate women to reach their goals, the **Women’s Empowerment Program** continues to improve the lives of women in Wayne County. The Women’s Fund awarded a \$15,000 grant to **Wayne County Schools Career Center—Adult Education Program** to offer a series of workshops free of charge to any woman, of any age, and any life situation.

The program provides an eight-week series of workshops that address the most common barriers to women, focusing on areas such as health and fitness, personal financial management, career success planning, and professional development. Participants complete a skills assessment, voluntarily participate in drug and alcohol screenings, and enter into a job search or workplace readiness program. All participants who complete the program receive a “Job Readiness Certificate.”

“We work with women where they are and help them move to where they want to go,” said Sandy Elliott, adult education manager for Wayne County Schools Career Center. Attendees come from all walks of life and circumstances. “We had ladies who were working on their second master’s degrees, sitting next to ladies working on their GEDs,” she said.

In addition, successful graduates from previous workshops participate as mentors. “As we build each other up, we are also encouraged to excel” stated Elliott. “I feel the mentorship portion of the program will be a win-win for our graduates and participants.”

Another benefit is the bond formed by participants during the course of the program. “The ladies develop a great relationship with one another, and they hold each other accountable,” said Elliott.

The program was first offered in 2016, serving 39 women. Many of the women pursued their desired goals, using the Women’s Empowerment Program as a launching point to greater success. Of those 39 women, 14 gained employment or increased their wages, 14 enrolled in educational courses, and all reported that they had gained increased self-confidence.



# Mother's Day Initiative

The **Mother's Day Initiative** provides donors the opportunity to honor the women who have made a lasting difference in their lives, while also making a difference in the lives of women and girls throughout Wayne County. A total of 194 women were honored or remembered on Mother's Day, with \$13,950 placed in **The Women's Fund** permanent endowment. Gifts to The Women's Fund will generate dollars to award grants to non-profit organizations serving Wayne County women...for generations to come.

While donors may contribute to The Women's Fund at any time and for any reason, the sole annual fundraiser of The Women's Fund is its Mother's Day initiative. A beautifully designed Mother's Day card is sent to the honoree the week of Mother's Day. If the gift is made to honor the memory of a special woman, a card is sent to the family.

---

## Gifts to The Women's Fund were made in honor or in memory of the following women:

Carolyn Abramson	Doris Day	Tracy Heck	Raquel Morgan	Helen Speer Schultz
Paula Abrecht	Tammy Despoy	Heather Henthorne	Julie Muller	Royana Schultz
Carrie Alt	Macey Dillon	Biff Collins Hogue	Jessica Musser	Sue Schultz
Mardelle Amstutz	Kathleen Dolan	Barbara Holmes	Becca Napoli	Kim Seaman
Dawne Andrews	Nita Downey	Rena Hondros	Kathryn B. Neal	Cheryl Shapiro
Betty Babbs	Pat Drager	Elizabeth Hooker	Lacie Neal	Frances Shoolroy
Marian Bailey	Lenore Dresch	Joan Houglan	Sheila Nelson	Susan Shultz
Bonnie Baker	Ginny Dyer	Deb Jenkins	Inez Neyhart	Kelly Silva
Cydney Bare	Jamie Dyer	Jackie Johnson	Sandy Nichols	Barb Slabaugh
Lisa Bare	Melanie Dyer	Valerie Jordan	Anne Ogren	Lila Smucker
Pat Bare	Roberta Earl	Miriam Keith	Janet Orr	Eileen Snow
Lexie Simpson Belcher	Angela Early	Florence Keltz	Barb Patterson	Beth Snyder
Cheryl Bishop	Kristina Emplit	Sara Kent	Clara Patton	Jane Snyder
Virginia Blackwell	Cathie Eyre	Bonnie Kinney	Sara Patton	Ellen Spangler
Jean Boen	Gindy Farmer	Karin Collins Kratoville	Treva Pennicks	Sonia Spires
Kathi Bond	Annette Fejes	Tracy Kross	Margo Perkins	Margo Stafford
Virgina Boreman	Bea Fejes	Ruth Lance	Jeanne Player	Elizabeth Stewart
Toby Ratcliffe Bothel	Joan Firmin	Amelia Lang	Lois Ramseyer	Mabel Stocker
Jenny Boucher	Deb Fischer	Rebecca Lauffenburger	Eileen Randolph	Mary Stockton
M. Suzanne Bowen	Dee Flaherty	Allyson Leisy	Audrey Ream	Kathy Studenic
Carol Briggs	Kathy Flechler	Beth Lewis	Nell Reardon	Ali Talcott
Vikki Briggs	Ammey Frank	Roberta Looney	Stephanie Reardon	Marilyn Tanner
Reta Brown	Mary Gasbarre	Stephanie Marthey	Rachel Relle	Phyllis Thomas
Bernice Hosfeld Buchholz	Penny Gasbarre	Chris Matthew	Elaine Renner	Donna Thompson
Shirley Buytendyk	Elizabeth Gensler	Kiley McAllister	Melissa Renner	Biz Timas
Amy Carmony	Margaret Gensler	Megan McClory	Hope Reynolds	Rita Tomassetti
Bernice Carmony	DeeAnn George	Jessica McConnell	Marcia Richard	Grace Tompos
Iris Choice	Germaine Gerber	Heidi McCormick	Shelby Roberts	Kathy Tschiegg
Janice Clark	Holly Gerber	Candace McCoy	Donna Robertson	Sophia Tustin
Betsy Frost Collins	Elaine Gilbert	Janet McCoy	Jocelyn Rodgers	Judy Van Wie
Deanie Collins	Dorothy Ginther	Mateya McCoy	Lorie Rodgers	Mary Karen Vellines
Mandy Collins	Julie Glass	Lindsey Meyers	Stacy Rottman	Cynthia Veraldo
Mary Dixon Collins	Cynthia Gooch	Lynn Meyers	Marilynn Rowdybush	Sarah Volta
Suzi Collins	Diane Gordon	Jamie Miles	Nancy Rutt	Linda Wallace
Joan Cooper	Kathy Gorman	Sarah Miles	Neva Rutt	Roberta Walmer
Marian Cropp	Kate Graf	Katherine Miller	Tonya Schmid	Eleanor Copeland Weis
Edith Crowner	Minnie Green	Kelly Miller	Joie Schmitz	Deborah Welch
Chris Davis	Carol Greenwood	Myia Miller	Metha Schmitz	Sarah Zimmerly
Donna Dale Davis	Mary Haven	Rachel Miller	Jamie Schuler	

# GIVE 365

Wayne County

## Philanthropy on a Dollar-a-Day



Representatives of GIVE 365 Membership pictured, from left to right: Judy Delaney, Robbie Ross, Chris Davis, Lisa Reusser, Greg Long, Eileen Good, and Ruth Crowley

*GIVE 365 unites and informs emerging philanthropists to make a collective impact on Wayne County, Ohio. With only a \$1 a day – or \$365 a year – pooled with gifts from other donors, members can join together to make a greater impact with their philanthropic dollars, while learning about the nonprofits which are making our communities better places to live and work. It also gives nonprofit organizations a way to demonstrate, to a captive audience, their impact and their potential.*

### Why Give 365?

Because anyone can be a philanthropist.

GIVE 365 allows you to leverage your charitable contributions with other's to support nonprofits throughout Wayne County. The larger the membership in the fund, the greater the impact.

Through GIVE 365, you will engage in philanthropy with your peers. You will share what you know, and you will learn about the issues facing Wayne County and the agencies that work to make our community a better place.

### Who is eligible to join?

Anyone! The annual contribution is \$365 – a dollar a day, payable by June 30th each year. We offer annual or quarterly payment options. All gifts are tax deductible.

### Where does my gift go?

Annual membership gifts, matches and general donations up to \$3,649 are allocated 50/50 between the GIVE 365 annual grant fund and the GIVE 365 endowment fund.

Lifetime membership gifts of \$3,650 or more are allocated at 5% to the GIVE 365 annual grant fund in the year received, and 95% to the GIVE 365 endowment fund.

The GIVE 365 endowment fund is a permanent charitable account where the principal is retained and invested. Every year, the earnings are used to provide charitable grants, in accordance with the Wayne County Community Foundation's spending policy. Over time, the fund's balance will grow, as will annual income available for grant making.

### How do I become a part of GIVE 365?

It's simple. Contact the Foundation at 330.262.3877 or visit us online at [www.WayneCountyCommunityFoundation.org](http://www.WayneCountyCommunityFoundation.org) to complete the membership card.



## GIVE 365 Grantees

*This year, GIVE 365 was able to award \$10,500 in grants to two area nonprofit organizations with strong programs addressing “Children’s Health and Development” in Wayne County.*

**Viola Startzman Clinic (VSC)** was awarded \$7,500 for their “Give Kids A Smile” program, which focuses on increasing oral health and providing oral health education for underserved children throughout the county. Nearly 30 percent of children in Wayne County are uninsured for dental care; those from lower income families are nearly twice as likely to have dental issues that need immediate attention. This program will allow VSC to partner with local nonprofits serving youth to host oral health outreach events, where children can receive free dental exams and cleanings, oral health education, and supplies for daily care of their teeth. In addition, VSC will work with area pediatricians and family practice providers to include oral hygiene exams as part of routine physicals.

**O’Huddle Inc.**, a youth mentoring organization, received \$3,000 to expand services to youth in both Orrville City Schools and Green Local Schools. O’Huddle pairs administratively-referred students with volunteer mentors to provide a spectrum of services. Currently in its fifth year, the program began in Wooster City Schools in response to increasing rates of poverty and trauma impacting students’ academic performance, behavior, and attendance. Past results have shown a 23 percent improvement in academics, 77 percent improvement in attendance, and 75 percent improvement in behavior issues among students in the program.

## 2017-2018 GIVE 365 Members

- |                         |                          |                             |   |
|-------------------------|--------------------------|-----------------------------|---|
| Scott & Amy Allen       | Eileen & Clair Good      | Joe & Sue Min Lee           | Julie Mennes                                    |
| Pat & Wayne Bare        | Andrew & Kara Good       | David Lehman                | Clyde & Kathy Miller                            |
| Chad & Sarah Boreman    | Mark & Diane Gordon      | David P. Lehman             | Constance Miller                                |
| Scott Boyes             | Bob Gorman               | Emma Lehman                 | Scott Plance & Wendy Bowman                     |
| Adam & Vikki Briggs     | Joseph Gorman            | Glenda Lehman Ervin         | Ferenc & Candy Relle                            |
| Wanda Christopher-Finn  | Bob & Peggy Gralinski    | Greg Long                   | Lisa & Dennis Reusser                           |
| John & Cathy Cook       | Tom & Catherine Graves   | Kathy Long                  | Bill & Robbie Ross                              |
| Marian Cropp            | Mackenzie Haiss          | Matt Long & Lynette Mattson | Bill Sheron                                     |
| Ruth & Paul Crowley     | Bob & Elizabeth Hooker   | Suzi & Pat Lorson           | David & Monica Shrader                          |
| Christine & James Davis | Tyler & Katherine Keener | Jim & Georgene Lytle        | Mary Alice Streeter                             |
| Judy Delaney            | Mary Ann King            | Amy Marinello               | Brenda Strunk                                   |
| Mark & Patty DelPropost | Joe & Elizabeth Knutson  | Lesley & Jason Mast         | Richard & Alicia Wallace                        |
| Bobbi Douglas           | Brett & Renee Lanz       | Thomas Matthew              | Jerry & Tiffany Witmer                          |
| Annette Fejes           | Rebecca Lauffenburger    | Beverly McCoy               | <i>One member has opted to remain anonymous</i> |



Artist's rendering of proposed Residential Treatment Center.

## Campaign for Recovery

*Opiate addiction is changing our culture. It's also changing addiction treatment strategies.*

In 2016, the State of Ohio led the country in the number of opiate overdoses and related deaths. Locally, we are no different. Every day we see tragic stories reflecting the effects of opiate addiction in our community. The number of people seeking treatment at **OneEighty, Inc.** has increased by 42% over the past four years. Further compounding the problem, successful recovery from opiate addiction takes much longer than recovery from other drugs and alcohol, stretching the organization far beyond their current capacities.

A trusted partner in Wayne and Holmes Counties for over 40 years, OneEighty, Inc. has established the **Campaign for Recovery Fund** at the Foundation – a \$2 million capital campaign to extend their continuum of care and provide new and proven tools to fight addiction.



The majority of the campaign will focus on a new Residential Treatment Center for Women. The new facility will include 16 treatment beds, with an additional 8 beds for children – enabling mothers and children to remain together when appropriate. The current facility will be converted to a 12-bed supervised recovery house, allowing for “stepdown” treatment to continue in a supported environment while the women obtain jobs or education.

The addition of a Recovery Medical Center within the current OneEighty office space will house Dr. Nicole Labor, a full-time physician, as well as two full-time nurses. Dr. Labor, a Board certified Addiction Medicine Specialist, brings a wealth of experience to our community. The addition of a designated medical center will enable the treatment staff to integrate medical and behavioral services for a continuum of care under one roof. The final component of the Campaign will create a community room that offers discreet and confidential meeting space for group counseling, 12-step programs, and other similar community needs.

Investing in a fully-functioning medical center, with a full-time addictionologist on staff, and the new Women's Residential Center will provide state-of-the-art services found in only a few locations. OneEighty's Campaign for Recovery will equip Wayne and Holmes Counties with the best tools to treat and help our family members, neighbors, and friends to recover from addiction.



# Doylestown Fights Childhood Hunger

---

*Twenty-two million children in America receive free or reduced-price meals through the National School Lunch Program and the National School Breakfast Program. For many of these children, school meals may be the only meals they eat. What happens when they go home over the weekend?*



Volunteers, Mitchell Smith and Karen Cutshall, pack bags with food for the Backpack Program.

The **Doylestown Community Food Cupboard** has found an answer to childhood hunger – instituting a “BackPack Program” to provide food to fill those gaps. The pilot program delivered a weekend supply of food to more than 80 elementary students in Chippewa School district each Friday. With a grant from Wayne County Community Foundation, through an **Anonymous Community Fund**, the organization will be able to expand the program throughout the school district – for an estimated increase of 175% in youth being served.

Students who meet the income requirements for free or reduced price lunches are eligible to participate in the program. In addition, those with younger siblings not yet in school could also be enrolled. Each Friday,

volunteers gather at the Food Cupboard to fill bags with a variety of breakfast and lunch items, as well as 7 to 8 items of fresh fruits and vegetables. Items such as family box meals and sweets are added also. As the bags are assembled, the group works quickly and efficiently to get them ready for delivery. Once at the schools, the school nurse and guidance counselor deliver the bags to the students’ classrooms.

As is the case in a number of communities, many children in Wayne County don’t have enough to eat. But through the “BackPack Program”, Doylestown residents are fighting childhood hunger one bag at a time.



# Shining a Light on Literacy

The football stadium was full and the lights were bright, but there was no game in Rittman on May 25th. Instead, over 600 people turned out for Rittman's first **Reading Under the Lights** program, organized by **United Way of Wayne & Holmes Counties** in partnership with **YMCA of Wooster** and the **City of Rittman**.

Partly funded by the **Andrew Berkey Fund** and an **Anonymous Community Fund** at the Foundation, the free, family-friendly community event was held to kick-off summer learning targeted to youngsters in Rittman and surrounding areas. Youth in Pre-Kindergarten through 7th grade, along with their friends and families, enjoyed the interactive event, which included Rittman Mayor William Robertson and his wife Donna reading *We're Going on a Bear Hunt* by Michael Rosen and Helen Oxenbury.

Each child who attended the event was given a sling bag containing five books to get them started on a summer of reading. This should help them to avoid the "summer slide" — the academic regression educators say takes place for students who neglect reading during their summer break. Additionally, participants were provided with library card access and sign-up.



## Seiwerts Legacy Continues

The Seiwert family has a long history with the Foundation; in fact, they have been involved from the very start. Robert (Bob) Seiwert was one of three members of the steering committee charged with forming the Foundation in 1978. Bob was instrumental in ensuring the success of WCCF. While he already had a full-time job, Seiwert took on the role of being the first executive director, a position he held for 16 years. He not only managed the Foundation entirely out of his office, but he also paid all of the Foundation's operating expenses himself. In 1996, Bob was elected to the WCCF Board of Trustees and remained a member until his passing in 2013.

Bob was not alone in his dedication to the Foundation. While his name was the one on the door, his wife Jean was his steadfast companion in this endeavor. They were equal partners in all they did – from home life and parenting of their two children to service to the community they loved. The Seiwerts looked beyond themselves, wanting to enable others in the community to enjoy the fruits of their efforts and benefit from the work of the Wayne County Community Foundation.

In 1997, the Trustees of the Foundation established the **Robert C. & Jean Seiwert Engineering Scholarship** to honor their contributions to the community and the Foundation. While this scholarship has honored Bob's work as an accomplished engineer, the couple's children wished also to honor their mother's passion for books and literacy. To do so, they have created the **Robert C. & Jean P. Seiwert Memorial Library Scholarship Fund** at the Foundation. This scholarship will begin accepting applications in 2019. Each year, it will provide funds to assist Wayne County residents who are pursuing careers in Library Science.

# Heartland Trail

---



Across the nation, Rails-to-Trails organizations work to save old railroad lines, turning them into vibrant paths for all to enjoy. They provide recreation for walking, cycling, and in some cases horseback riding. Locally, **Rails-to-Trails of Wayne County** is doing its part to add value to the lives of residents – as having access to trails has been shown to increase mobility, improve overall health, spur economic development and job creation, protect the environment, and create powerful connections within, to, and across communities.

Past projects have included the County Line Trail, which runs from Creston to Rittman; the Sippo Valley Trail, which connects Dalton to Massillon; and the Fredericksburg Trailhead for the Holmes County Trail, which begins in Wayne County and travels south to Killbuck.

Their newest venture, the **Heartland Trail**, will fill a major gap in the most significant recreational trail in Ohio, which will ultimately allow bicyclists to ride from the Ohio River in Cincinnati to Lake Erie in Cleveland. In all, the Heartland Trail will be over 10 miles long, connecting Orrville to Marshallville, and on to Clinton where it will join up with the Towpath Trail. In addition, the Trail links the City of Orrville's three primary business districts, and

is adjacent to both the Orrville City Schools campus and Orr Park.

Rails-to-Trails of Wayne County has already completed the trailhead, in the heart of downtown Orrville next to the city's historical railroad depot, up to Forrer Road, thanks in large part to a grant from Ohio Department of Natural Resources. They are currently developing the next phase of the trail, which will take it up through Marshallville, partially funded with a grant from an **Anonymous Community Fund** at Wayne County Community Foundation.

As a long term, sustainable project, the Heartland Trail will provide easy access to a trail for health and recreation and will present new opportunities for retail, restaurants, and visitor attractions.

# Wayne County Fair Undertakes Capital Campaign



*The Wayne County Fair has something for everyone. Billed as “Ohio’s Foremost Agricultural Fair”, it is the largest annual county-wide event – with more than 100,000 people attending each year.*

Perennial favorite events at the Fair include the farm tractor pulls, demolition derby, horse and livestock shows, and produce and baking competitions. The Wayne County Junior Fair, held concurrently with the County Fair, is thought to be the largest gathering of 4-H and FFA participants in the State of Ohio.

When the fair opens its gates for its 170th season in September 2019, it will have a new look and layout. This year, The Wayne County Fair Board joined forces with the Wayne County Agricultural Society to establish the **Junior Fair Expansion Fund** at the Foundation. The Fund will support a capital campaign to raise \$1.75 million for two new buildings that will add a total of 40,500 square feet.

Actively involving children and young people is one key to the Fair’s success. With this in mind, the fairgrounds will add a 26,100 square-foot show arena and a 14,400 square-foot livestock building. In addition, the facility can be used by community members as a one-of-a-kind Event Center during the remainder of the year.

The greatest challenge for expansion is the fairgrounds’ location in a flood-plain. The poultry, goat and rabbit barns, as well as the Carter Show Arena and pavilion, must be moved or torn down to make room for the new buildings. The condition of the old buildings and space available on the grounds will determine what will happen to the existing buildings.

The Fair Board jump-started the campaign in December 2017 with a pledge of \$250,000. More than 20 individual fair board members and their families have pledged another \$71,000. The campaign runs through the 2018 Wayne County Fair and donations may be made over a five-year period. All gifts are tax deductible through the Wayne County Community Foundation.



# List of Funds

**Wayne County Community Memorial Fund** provides a way for anyone to honor or remember a loved one, colleague, client, or friend with a gift that will make a lasting difference in our community. Contributions to the Fund are pooled with other gifts to provide grants to local nonprofits that assist those in need and help enrich the quality of life in our communities.



## *Community Funds*

Community funds provide flexibility in addressing the changing needs of the community and enhance the quality of community life. They are used to fund WCCF's semi-annual competitive grant program which receives applications from the community's non-profit organizations.

Jeanne Heise Adams Community Fund  
Beaverson Foundation Community Fund  
David and Carol Briggs Community Fund  
William A. Foll, Sr. and Patricia K. Foll  
Community Fund  
General Fund  
Margaret Hauenstein Memorial Fund  
Nolan and Elsie Hite Community Fund  
Ceylon E. Hudson Charitable Fund  
John Kaylor Memorial Fund  
Earle and Ann Klosterman Family Community Fund  
Edward, Arlene and Kaye Maibach  
Community Fund  
Tug and Alma Maibach Family Fund  
Marjorie B. Newland Memorial Fund  
Florence L. Rice Community Fund  
Leonard Schnell Community Fund  
Lillian Steiner Community Fund  
John G. Taggart Community Fund  
WCCF Trustees Community Fund  
Wayne County Community Memorial Fund  
Charles R. and Henrietta Yenne Fund

## *Field of Interest Funds*

Field of Interest funds allow donors to specify a cause, geographic area, or population for which the funds are to be used. The Foundation awards grants to organizations within the specified field of interest designated by the donor. The following funds are fulfilling the charitable intentions of their founders by meeting our community's needs in the fields of their choice:

Andrew D. Berkey Fund  
James A. Boyd Fund  
Pearl M. Braham Children's Fund  
Carl E. Congdon, Jr. and Susanna Congdon McIntyre  
Memorial Fund  
Maud B. Congdon Memorial Fund  
Raymond and Pauline Croskey Fund  
Harold and Lois R. Freedlander Community  
Healthcare Fund  
Stanley C. Gault Philanthropic Leadership Fund  
Lois Hochstetler Speech-Language Fund  
Albert "Koby" Kobilarcik Educational Fund  
Paul Leckrone Memorial Fund  
Mathur Family Community Fund (new)  
Harold W. Picking Charitable Fund  
Kathryn Sanders Rieder Fund  
The Women's Fund  
Workman Family Community Grant Fund

# *Donor Advised Funds*

Many of our donors maintain an active interest in the WCCF's activities by participating in a grantmaking partnership through donor advised funds. These funds allow donors to make suggestions for distributions to specific charities. Many donors utilize the Foundation's expertise to assist them in identifying the needs of the community. Sincerest thanks to the following individuals and families who are turning their charitable intentions into action through their Donor Advised Funds.

Rhett, Lisa, and Leah Faye Acker Fund (new)

William B. and Martha Baer Memorial Fund

Mathew William K. Bauerle Memorial Fund for  
Sarcoma Cancer Research (new)

Beaverson Foundation Fund

Ronald L. and Mary E. Bricker Charitable Fund

Adam and Vikki Briggs Charitable Fund

David and Carol Briggs Charitable Fund

Broehl Family Fund

Kelly Brunn Passion Fund (new)

Gene and Joan Buehler Charitable Fund

Greg and Darby Buehler Charitable Fund

Roger and Valerie Buehler Charitable Fund

Scott and Mona Buehler Charitable Fund (new)

Janet and Daniel Calhoun Fund

Frank A. Cebul II Charitable Fund

Frank and Linda Cebul Charity Trust Fund

Robert and Bernadette Cebul Charitable Fund

Corey John Cline Fund

George and Pauline Cooper Charitable Fund

George T. Dunlap Community Foundation Fund

Mary V. Eberhart Family Learning Fund

Susan G. and Richard C. Figge Fund

Jim and Lori Fishburn Fund (new)

Foster Family Fund

Kathryn G. Freed Fund

Richard D. Gates Fund

Brad and JoAnn Gerber Fund

Holly R. Gerber Charitable Fund

Jim and Germaine Gerber Charitable Fund

Gesler Family Charitable Fund

The Giving Fund

Mark and Diane Gordon Charitable Fund

Greater Plan Fund

Hendrick Family Foundation Fund

Ronald E. and Prudence C. Holtman Charitable Fund

Robert L. and Elizabeth H. Hooker Fund

Raymond E. and Lucille S. Houser Fund

Johnston Charitable Fund

Mark Kiper Memorial Fund

Klise Family Fund

Brian R. Lacey Memorial Fund

Rick & Linda Lowe Fund (new)

Paul Matia Memorial Charities Fund

Charles D. Meenan Memorial Fund

Aden and Esta Miller Family Fund

Ken and Lois Miller Fund

Daniel V. Mishler Memorial Fund

Lynn R. Moomaw Fund

Naumoff Family Charitable Fund

Jim and Ann Obrecht Family Fund (new)

The Oscar Fund

Sara L. Patton Donor Advised Fund

Frances and Lemoine Peart Family Fund

William Peart Family Charitable Fund

Candace K. and Ferenc M. Relle, Jr. Fund

Romich Family Fund

Rose Family Charitable Fund

Dwight and Vicki Weir Roseler Charitable Fund

Chris Schmid Memorial Fund

Dorothy Hoover Schmitt Memorial Fund

Stephen and Cheryl Shapiro Family Fund

Lee A. Simpson Fund

J. R. and Sue Smail Charitable Fund

Jim and Dottie Snyder Charitable Fund

David Spector Charitable Fund (new)

Adam and Kate Starr Family Fund

Dr. John Streeter Memorial Fund

Craig Alan Swope Memorial Fund

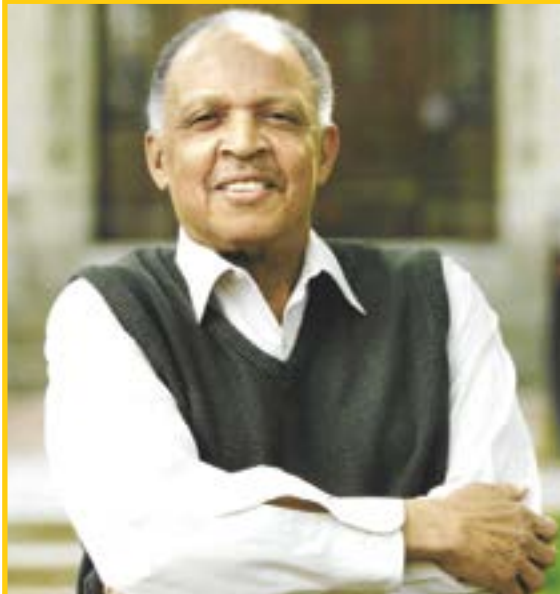
Triway High School Opportunity Fund

Venkataraman Family Fund

Viking Fund

Wayne County/Akron Children's Hospital Healthy  
Kids Fund

Wayne County Charitable Eye Fund  
 Wayne County Retired Teachers Association Fund  
 Jim and Cindy Webster Charitable Fund (new)  
 Orren D. and Polly G. Weitzel Fund  
 Joseph J. and Helen Weltmer Charitable Fund  
 Theodore R. Williams Memorial Fund



Created upon his death in 2005, the *Theodore R. Williams Memorial Fund* was established to enhance the *Wooster Chamber Music Series*, which Professor Williams established during his distinguished tenure as the Robert E. Wilson Professor of Chemistry at The College of Wooster.

## Corporate Advised Funds

Through a corporate advised fund, a business has greater flexibility to support local charitable needs by effective seasonal budgeting, improved cash flow, and reduced administrative overhead.

Bogner Group Fund  
 Buckeye Oil Producing Company Advised Fund  
 Critchfield, Critchfield & Johnston Charitable Fund  
 RBB Foundation Fund  
 Sprenger Health Care Systems Fund  
 Western Reserve Group Fund  
 Will-Burt Charitable Fund  
 Wooster Community Hospital Foundation Fund  
 Wooster Hydrostatics Fund

## Designated Funds

Each of the following designated funds represents the charitable passions of a person or agency in our community. Thank you for your commitment to improving Wayne County.

Bertie Lou Allshouse Education Fund  
 Robert A. Anderson Fund  
 Boys and Girls Club of Wooster Fund  
 Thomas Lewis Cairnie Memorial Fund  
 CAMO Opportunity Fund  
 Campaign for Recovery Fund (new)  
 Central Christian School Endowment Fund  
 CHIEF Campaign Fund (new)  
 Christmas Run Pool Fund  
 Church of the Saviour Legacy Ministry Fund  
 Carl E. Congdon, Jr. and Susanna Congdon McIntyre  
 Orrville Area Boys & Girls Club Fund  
 Congdon Fund for the Orrville Historical Society  
 Cornerstone PlayLab Endowment Fund  
 Dalton Local Facility Improvement Fund  
 Dalton Schools Community Supported Greenhouse Fund  
 Dixon Fund  
 Downtown Beautification Fund  
 Harold C. and Juanita L. Downey Fund  
 Employment Resource Fund  
 Charles W. Follis Memorial Fund  
 Friendsville Residential Home, Inc. Fund  
 Erma S. Gates Memorial Fund  
 GIVE 365 Endowment Fund  
 GIVE 365 Fund  
 Gault Fund for American Red Cross (new)  
 Gault Fund for Goodwill Industries of Wayne and  
 Holmes Counties, Inc. (new)  
 Gault Fund for OneEighty, Inc. (new)  
 Gault Fund for The Salvation Army (new)  
 Gault Fund for United Way of Wayne & Holmes  
 Counties, Inc. (new)  
 Gault Fund for The Village Network (new)  
 Gault Fund for Viola Startzman Clinic (new)  
 John Hamel Memorial Endowment Fund  
 Heinbuch Memorial Fund  
 Alice M. Horn Designated Fund  
 Sandra C. Hull Downtown Legacy Fund (new)

International Baccalaureate Diploma Fund  
 Kristen Jackson Memorial Fund  
 Junior Fair Expansion Fund (new)  
 Killbuck Watershed Land Trust Brinkhaven Fund  
 Killbuck Watershed Land Trust Defense Fund  
 Kingsway Christian School Endowment Fund  
 Kneseth Israel Temple Funds  
 Hazel Knight and Sarah Henthorne Memorial Fund  
 Paul Ladd/Rotary Jason Project Fund  
 Paul Ladd/Rotary Library Media Center Fund  
 Wallace and Catherine Lytle Memorial Fund (new)  
 Edward, Arlene and Kaye Maibach Fund  
 Charles W. and Mary K. Mohler Memorial  
 Ohio Wildlife Fund  
 NAMI Wayne and Holmes Counties Capital Fund  
 2018 Natatorium Renovation Fund  
 Oak Hill Park Fund  
 Pillars of St. Paul Fund  
 Rittman Recreation Center Fund  
 Charles F. Rogers Memorial Fund  
 Catherine Seifried Memorial Fund Smithville  
 12th Man / Booster Club Athletic Improvement Fund  
 Marlyn Teague / Wee Care Center Foundation Fund  
 Veterans Memorial In Smithville Fund  
 Village of Fredericksburg Fund  
 Viola Startzman Free Clinic Permanent Endowment Fund  
 Carol Watson Memorial Fund  
 Wayne County Community Youth Foundation  
 Wayne County Public Library Liberty Street Library  
 Permanent Endowment Fund  
 Wayne County Public Library System Permanent  
 Endowment Fund  
 Wayne County Schools Career Center Fund  
 Wayne Growth Partnership-FFEFE Fund  
 Weimer Fund  
 Wooster City Schools Athletic Scholarship Fund  
 Wooster City Schools General Scholarship Fund  
 Wooster City Schools Music Scholarship Fund  
 Wooster Community Pool Fund  
 Wooster Community Recreation and Fitness Center Fund  
 Wooster High School Music Parents Endowment Fund  
 Wooster High School Speech and Debate  
 Endowment Fund

Wooster Memorial Parks Foundation Fund  
 Wooster Uniformed Services Fund  
 Wooster Youth Baseball Fund

---

## *Agency Funds*

Nonprofit organizations are vital to the success and growth of our community. The following agency funds work to ensure each organization's security, stability, long-range financial planning, and help fulfill its mission.

Apple Creek/East Union Historical Society and  
 Community Learning Center Endowment Fund  
 Arts Education Venture Fund  
 Boys' Village Foundation – G.A.R. Fund  
 James K. Buckwalter Fund for the Wayne County  
 Board of Developmental Disabilities  
 Canaan Lutheran Church Endowment Fund  
 Central American Medical Outreach (CAMO) Fund  
 Central Christian Church Endowment Fund  
 Chippewa Excellence for Education Foundation Fund  
 Christian Children's Home of Ohio – Faye Lytle  
 Memorial Endowment Fund  
 Christian Children's Home of Ohio – Gary & Bobbie  
 Porter Permanent Endowment Fund  
 Community Action Wayne/Medina Fund  
 Congress Community Church Fund  
 Congress Community Church Operating Fund  
 Counseling Center Fund for Children and Families  
 County Line Historical Society Fund  
 Jerry Dunlap Memorial Endowment Fund  
 Goodwill Industries of Wayne and Holmes  
 Counties, Inc. Endowment Fund  
 Green Local Schools Performing Arts Center Fund  
 Heartland Education Fund - Charter (new)  
 Ralph R. and Grace B. Jones Fund  
 Keck Permanent Endowment Fund  
 Kidron Community Park Maintenance Fund  
 Killbuck Watershed Land Trust Stickney Fund  
 Wallace R. Lytle Fund for the Smithville Community  
 Historical Society  
 Mt. Eaton Care Center Inc. Fund  
 NAMI Wayne and Holmes Counties Operating  
 Reserve Fund





Nick Amster, Inc. provides employment services and job growth opportunities to adults with developmental disabilities in Wayne County to enable them to learn, work and achieve their highest level of independence. *The Nick Amster Program Fund* provides supplementary financial support to allow clients to more fully participate in the programs.

**Nick Amster Program Fund (new)**

- Judy Nihlen Fund for the Women’s Committee for the Wooster Symphony Orchestra
- OneEighty Community Prevention and Recovery Fund
- OneEighty Endowment Fund to Stop Family Violence
- OneEighty Stop Family Violence Fund
- Orrville Area Boys and Girls Club Facilities and Fixtures Fund
- Orrville Area Boys and Girls Club General Fund
- Orrville Area Boys and Girls Club Teen Supreme Fund
- Orrville Area Development Foundation Fund (new)**
- Orrville City Schools Endowment Fund
- Orrville Public Library Legacy Fund
- Orrville YMCA Fund
- Parent to Parent Fund
- People to People Ministries Endowment Fund
- St. John Lutheran Church Capital Fund
- Smithville Community Historical Society Fund
- Triway Excellence for Education Fund
- United Way Fund
- United Way of Wayne and Holmes Counties Endowment Fund
- VSC Operating Fund

- Wooster Area Chamber of Commerce Young Professionals Fund
- Wayne Center for the Arts Fund
- Wayne County Committee for Crippled Children and Adults Endowment Fund
- Wayne County Fire & Rescue Association Regional Training Facility Fund
- Wayne County Historical Society GAR Permanent Endowment Fund
- Wayne County Historical Society Permanent General Endowment Fund
- Wayne County Humane Society Endowment Fund
- Wayne County Law Library Fund
- Wayne Growth Partnership – WEDC Fund
- West View Healthy Living Irvin Family Benevolent Care Endowment Fund
- Wilderness Center, Inc. Fund
- Women’s Committee for the Wooster Symphony Orchestra Fund
- Wooster Christian School Fund
- Wooster Friends of the Wayne County Public Library Fund
- Wooster Rotary Foundation, Inc. Fund
- Wooster Township Fire and Rescue Association Equipment and Education Fund
- YMCA of Wooster At-Risk Youth Fund
- Zion Lutheran Endowment Fund



Local fire and rescue professionals can continually sharpen their skills and learn best practices for protecting citizens at the **Wayne County Fire and Rescue Association Regional Training Facility**. In addition to fighting fires in the “Burn Building,” the facility offers farm rescue, HAZMAT training, oil and gas props, car fires, and much more. The Association established the **CHIEF Campaign Fund** at the Foundation to raise capital funds to address the changing needs of fire and rescue education.

# Scholarship Funds and Recipients

Scholarship funds help students to realize their dreams of a college education. In addition to scholarships that benefit high school seniors, there is a growing need to support post-high school educational opportunities for individuals who didn't finish their college educations, need to be retrained, or are in advanced fields of study. For the 2018-2019 academic year, the following funds awarded over \$575,000 in scholarships to help the next generation of leadership.

## **AAUW-Wooster Branch-Scholarship**

Caitlyn Gademer, *The University of Akron - Wayne College*  
Ashlie Pethel, *The University of Akron*  
Sharon Shehy, *Mount Vernon Nazarene University*  
Aimee Lee Smith, *The University of Akron*  
Karen Wald, *Ohio University*  
Taylor Whitworth, *Kent State University - Salem Campus*

## **Larry and Cindy Acker Scholarship**

Mackenzie Albaugh, *The University of Akron - Wayne College*  
Traevon Alford, *The University of Akron*  
Brent Dillon, *Ashland University*  
Sierra Moore, *Ohio Christian University*  
Rachel Schmidt, *Ashland University*

## **Edna E. Adams Scholarship**

Katey Arbogast, *Kent State University*  
Chloe Boucher, *Cedarville University*  
Devon Boyce, *Cleveland State University*  
Elise Kern, *Cedarville University*  
Luciano Raffa, *Cedarville University*

## **Leroy and Helen Adams Community Service Scholarship**

Melita Wiles, *Georgia Institute of Technology*

## **John S. Alioto Scholarship**

Sierra Kauf, *The University of Akron - Wayne College*

## **Clarence V. and Evelyn F. Amstutz Memorial Scholarship**

Sarah Doty, *Cedarville University*  
Hannah Lechner, *Cedarville University*  
William Lehman, *The University of Akron - Wayne College*  
Adam Manley, *Youngstown State University*  
Jae Weaver, *Ashland University*

## **Carlos Appleman Scholarship**

Jordan Neely, *The University of Akron*

## **Patti Ayers Memorial Scholarship**

Brittany Hochstetler, *Stark State College*

## **Jean Baird Scholarship for the Arts**

Wayne Center for the Arts awarded Baird Scholarships to the following:

Tabitha Burchett, Upi Gunawan, Christine Kangas, Elizabeth Madison, Jason Noe, Linda Rusinko, Doreen Smyth, and Sheryl Tyree

## **George Harrison and Castine Barnett Scholarship**

Delaine Johnson, *Bryant & Stratton College*

## **Roy S. Bates Scholarship**

Alex Alger, *Ashland University*  
Kaleb Bauman, *Mount Vernon Nazarene University*  
Zoe Carmichael, *Ohio Dominican University*  
Maggie Coblentz, *Mount Vernon Nazarene University*  
Weston Garman, *Malone University*  
Katie Richardson, *Notre Dame College*  
Trent Shane, *Walsh University*  
Parker Smith, *Heidelberg University*

## **Blosser Brothers (Lee and John) Scholarship**

Thomas Becker, *The Ohio State University - Agricultural Technical Institute*  
Maxwell Hanreck, *The University of Akron*

## **Harold Bowman Award**

Sarah Plain

## **Pearl M. Braham Scholarship**

Riley Renner, *University of Cincinnati*

## **Darl W. Brooks Memorial Scholarship**

Clay Miller, *Youngstown State University*  
Laurel Sidle, *Mount Vernon Nazarene University*

## **Don and Teara Buren Scholarship**

Christine Franks  
Rachael Guidetti

## **Jim Carmichael Memorial Scholarship**

Audrey Hochstetler, *Cleveland State University*

## **Mary Jane Chapman Memorial Scholarship**

Makayla Miller, *The College of Wooster*  
Kelsi Trivette, *The College of Wooster*

## **Charles S. Cicconetti Scholarship**

Madeline LaBouf, *Miami University*

## **Larry and Doris Clark Scholarship**

Emma Banton, *The University of Akron*  
Syndra Mahavixay, *University of Mount Union*

## **W. Lee Culp Scholarship**

Delanie Hranko, *Kent State University*

## **Dalton Alumni Scholarship**

Seneca Doty, *Bowling Green State University*

## **Mr. and Mrs. Loyd Dalton WHS Athletic Scholarship**

Brent Dillon, *Ashland University*

**Willard Ebert Memorial Fund/Orrville Exchange Club Scholarship**

Tyler Able, *The University of Akron*  
Emma Horsburgh, *University of Cincinnati*  
Chris Shoup, *The Ohio State University*  
Sadanaï (Dino) Sibounheuang, *Kent State University*

**Empowering Women Through Technical Education Fund**

De'Asya Gray, *Ohio Dominican College*  
Ashlie Pethtel, *The University of Akron - Wayne College*

**Marguerite Folsom Eysen Scholarship**

Kaitlyn Brownson, *The Ohio State University*

**Joyce M. Fast Scholarship**

Elizabeth Maiwurm, *The University of Akron*

**Nancy, Cheryl, and James Frank Memorial Scholarship**

Christina Spedden, *Kent State University*



**Christina Spedden, Wooster High School**

Recipient of Nancy, Cheryl, and James Frank Memorial Scholarship, Ralph R. and Grace B. Jones Community Scholarship, Donna Devore Lowe Scholarship, Wallace & Catherine Lytle Family Scholarship, Noble Foundation Scholarship, Sam Shapiro Scholarship for Wooster Rotary, and Wayne County Nursing Consortium Memorial Scholarship

**Laura B. Frick Scholarship**

Hannah Miller, *Kent State University*  
Lynnsey Winchell, *Allegheny College*

**Friendship Award**

McKenzie Coleman, *Bowling Green State University*  
Madison Smith, *Kent State University*

**Edgar G. Garvin Scholarship**

Natalie Basinger, *Ohio University*

**Dick Gates Academic Prize**

Isabella Rico  
Estelle Shaya

**Flo K. Gault Scholarship**

Heather Iona, *Aultman College of Nursing and Health Sciences*  
Karen Wald, *Ohio University*

**David Hedrick Memorial Scholarship**

Noah Riggerbach, *The University of Akron*

**Margaret Hedrick Memorial Scholarship**

Thomas Caillet, *Ohio Northern University*

**Roger & Evelyn Hessidence and Family Scholarship**

Rebecca Berger, *University of Toledo*

**Kristen Jackson Scholarship**

Steve Cozzuli, *Oberlin College*

**Ralph R. and Grace B. Jones Community Scholarship**

Christina Spedden, *Kent State University*

**Mark Kiper Scholarship**

Cole Hissong, *The College of Wooster*  
Jacob Price, *The College of Wooster*  
Nick Rosner, *The College of Wooster*  
Zachary Schuch, *The College of Wooster*

**Knetzer-Urwin Family Scholarship**

Allyson Brown, *Bluffton University*  
Julia Tefs, *University of Pittsburgh*

**Paul Ladd Memorial Scholarship**

Evan Doan, *Wheaton College*

**Lady A Scholarship**

Nicholas Cosmo, *Case Western Reserve University*

**John W. Landis Scholarship**

Cody Tegtmeier, *The Ohio State University*

**F. Emerson Logee Memorial Law Scholarship**

Emilie Raber, *University of Pennsylvania Law School*

**Mathilda "Tillie" Lorincz Scholarship**

Danielle Host, *Aultman College of Nursing and Health Sciences*

**Donna Devore Lowe Scholarship**

Christina Spedden, *Kent State University*

**Wallace and Catherine Lytle Family Scholarship**

Heather Iona, *Aultman College of Nursing and Health Sciences*  
Matthew Kelly, *University of Findlay*  
Jordan Neely, *The University of Akron*  
Mykenzie Snyder, *Western Carolina University*  
Christina Spedden, *Kent State University*

**Magni-Power Company-William C. Martin Jr. Scholarship**

Thomas Caillet, *Ohio Northern University*  
David Connor, *The University of Akron*  
Joshua Squirrell, *University of Cincinnati*

**Edward, Arlene and Kaye Maibach Career Center Scholarship**

Danielle Host, *Aultman College of Nursing and Health Sciences*  
Sierra Moore, *Ohio Christian University*

**Edward, Arlene and Kaye Maibach Norwayne Scholarship**

Traevon Alford, *The University of Akron*  
Isaac Klingman, *The Ohio State University - Agricultural Technical Institute*  
Logan Snow, *Baldwin Wallace University*

**Edward, Arlene and Kaye Maibach Wayne County Scholarship**

Madeline LaBouf, *Miami University*

**SHS Mann Scholarship**

Daniel Bachman, *The University of Akron - Wayne College*

**Julie and David Mennes Healthcare Scholarship**

Marisa Zerrer, *Stark State College*

**Steven Miller "Education Works" Memorial Scholarship**

Ashlie Pethtel, *The University of Akron - Wayne College*

**Clinton E. Missler Agri-Scholarship**  
Andrew Cochran, *Ohio Northern University*

**Benjamin E. Moody Scholarship**  
Brittney Host, *The University of Akron*

**Robert H. and Sara C. Moore Memorial Scholarship**  
Josalynn Heckman, *The University of Akron*

**Thomas A. Nickle Scholarship**  
Justine May, *The University of Akron*

**Noble Foundation Scholarship**  
Melanie Basinger, *Ohio University*  
Andrew Cochran, *Ohio Northern University*  
Kyle Deeken, *Bluffton University*  
Audrey Hochstetler, *Cleveland State University*  
Delanie Hranko, *Kent State University*  
Olivia Lang, *Muskingum University*  
Taylor McMarlin, *Mount Vernon Nazarene University*  
Chrstitina Spedden, *Kent State University*

**Northwestern Alumni and Friends  
Association Scholarship**  
Shelby Aulger  
Rachael Mahr

**OABGC/LaMont H. Shultzman Scholarship**  
Nicole Martin, *The University of Akron*



**Nicole Martin, Orrville High School**  
Recipient of OABGC/LaMont H. Shultzman  
Scholarship, Steven H. Smith Scholarship,  
and Workman Family Scholarship

**OABGC/Eugene W. Workman Scholarship**  
Megan Malcuit, *The University of Akron - Wayne College*

**Panyard Family Memorial Scholarship**  
Emma Whalen, *Youngstown State University*

**William "Bill" Patterson Scholarship**  
Andrew Cochran, *Ohio Northern University*

**Cory Pelfrey Memorial Scholarship**  
Audrey Bishop, *University of Mount Union*

**Ferenc M. Relle Scientific Scholarship**  
Connor Niro, *University of California - Los Angeles*

**Gertrud Tubach Relle Performing Arts Scholarship**  
Elizabeth Maiwurm, *The University of Akron*

**Norma and Kenneth G. Rhode Scholarship**  
Andrew Cochran, *Ohio Northern University*

**Rittman Masonic and Eastern Star Scholarship**  
Kyle Bauman, *The University of Akron*  
Anne Beery, *Ohio University*  
Nicole Deertz, *Kent State University*  
Emma Frantz, *Ashland University*  
Madison Smith, *Kent State University*

**Robin Industries Employees' Educational Resource Fund**  
Taylor Beckett, *University of North Carolina at Charlotte*  
Kaitlyn Bretz, *Ohio University*  
Brianna Burger, *Walsh University*  
Emily Dieringer, *Ashland University*  
Taylor Harmon, *Kent State University*  
Miranda Hayes, *Canton City School District*  
Sinjon Howell, *Kent State University - Tuscarawas*  
Audrey Jokovich, *Ohio University*  
Matthew Keim, *The University of Akron*  
Nathan Kloha, *Ohio University*  
Chelsea Kopp, *Kent State University*  
Kinsee Miller, *Buckeye Career Center*  
Hannah Mosgrove, *Kent State University*  
Leah Mosgrove, *Kent State University*  
Alyssa Penick, *North Central State College*  
Tamara Sabo, *Gestalt Institute of Cleveland*  
Marcus Schlabach, *Ohio Technical College*  
Nathan Schlosser, *Kent State University - Tuscarawas*  
Allison Shroyer, *Kent State University*  
Garrett Sin, *University of Toledo*  
Austin Thomas, *The University of Akron*  
Connor Troyer, *University of Mount Union*  
Ariel Walker, *Ohio University*  
Brianna Way, *Cuyahoga Community College*  
Brooke Way, *Cuyahoga Community College*  
Jennifer Wengerd, *Ashland University*  
Alex Young, *Southern New Hampshire University*  
Courtney Young, *Tiffin University*

**Daniel Rohr Scholarship**  
Sydney Bitting, *Miami University*

**Ryder Coach's Award and Scholarship**  
Evan Doan, *Wheaton College*

**St. John Lutheran Church (McZena) Scholarship**  
Rebecca Reynolds, *Ashland University*  
Haylie Sigler, *Ashland University*

**Walter and Mary Esther Schmid Scholarship**  
Brooke Aukerman, *Youngstown State University*  
Allison Emler, *Ashland University*  
Trenton Kauffman, *Heidelberg University*  
Scott Swinehart, *The University of Akron - Wayne College*

**Catherine E. and Frank J. Seifried Scholarship**  
Jennifer Hahn, *Ohio Northern University*  
Kayla Maximovich, *The University of Akron*  
Katie Shupp, *Kent State University*  
Sara Stiles, *The University of Akron*

**Robert C. and Jean Seiwert Engineering Scholarship**  
Andrew Cochran, *Ohio Northern University*

**Dana Shafer Scholarship**  
Corbin Lanker, *The Ohio State University*

**Sam Shapiro Scholarship for Wooster Rotary Club**  
Christina Spedden, Kent State University

**Eugene A. Sharick Music Scholarship**  
Joseph Capozzio, Capital University  
Megan Koenig, Malone University  
Peter Loverink, Kent State University  
Katelyn Tackett, The College of Wooster

**Arden and Clarice Shisler Nationwide Insurance Scholarship**  
Garrett Gwin, The Ohio State University -  
Agricultural Technical Institute  
Alyson Scheibe, West Virginia University

**Frances G. Shoolroy Scholarship**  
Isabelle Cannon, The Ohio State University  
Patrick Carmel, The College of Wooster  
Shuo Cheng, Emory University  
Aaron Cochran, The Ohio State University  
Andrew Cochran, Ohio Northern University  
Alexander Hasapis, Allegheny College  
Kirsten Imhoff, The University of Akron  
Madeline LaBouf, Miami University  
Katelynn McDermott, Malone University  
Madelynn McDermott, Malone University  
Emily Miles, Kent State University  
Colton Morgan, Case Western Reserve University  
Amber Swigart, The Ohio State University  
Adria Woodruff, The College of Wooster

**Shreve Presbyterian Church (USA) Scholarship**  
Madison Hancock, Baldwin Wallace University

**Beulah Siegel Scholarship**  
Theresa Caldwell, The Ohio State University  
Grayson Blythe, Davis & Elkins College

**Lucille F. Silver Memorial Scholarship**  
Alyssa Diller, Mount Vernon Nazarene University  
Emily Ramseyer, Ashland University

**Paul R. and Elizabeth C. Simon Scholarship**  
Brooke Beun, Walsh University  
Jessica Booth, The Ohio State University  
Cheyanne Rufener, Coastal Carolina University  
Matthew Stitt, The Ohio State University

**Steven H. Smith Scholarship**  
Scotlyn Clarke, Kent State University  
Nicole Martin, The University of Akron

**Kandy Swain Memorial Scholarship**  
Mackenzie Albaugh, The University of Akron - Wayne College

**John A. Tooley Scholarship for Developmental Disabilities**  
Hannah Sanchez, Kent State University

**Wadsworth-Rittman Hospital Medical Staff Memorial Scholarship**  
Jacob Carr, Ohio Northern University  
Izabel Eastwood, Xavier University

**Pauline M. Walker Educational Scholarship**  
Olivia Anderson, The University of Akron - Wayne College  
Jaidyn Cole, Kent State University  
Madisyn Cover, Walsh University  
Kehra Feltner, The University of Akron - Wayne College  
Taylor Helms, West Virginia University  
Sierra Kauf, The University of Akron - Wayne College  
Stella Smith, Kent State University

Alexis Tillison, University of Toledo  
Hannah Wile, The University of Akron

**Wayne County Bar Association Scholarship**  
Emilie Raber, University of Pennsylvania Law School  
Elizabeth Wagoner, Charleston School of Law

**Wayne County 4-H/FFA Doyle Findley Scholarship Fund**  
Katie Stull, Purdue University

**Wayne County 4-H General Scholarship Fund**  
Andrew Cochran, Ohio Northern University  
Garrett Gwin, The Ohio State University -  
Agricultural Technical Institute  
Hannah Miller, Kent State University  
Hannah Stroock, The Ohio State University -  
Agricultural Technical Institute

**Wayne County Nursing Consortium Memorial Scholarship**  
Jacob Carr, Ohio Northern University  
Allison Emler, Ashland University  
Elise Kern, Cedarville University  
Carson Ledford, Mount Vernon Nazarene University  
Hannah Miller, Kent State University  
Christina Spedden, Kent State University  
Amy St. John, Ashland University



**Jacob Carr, Rittman High School**

Recipient of Wayne County Nursing Consortium Memorial Scholarship and Wadsworth - Rittman Medical Staff Memorial Scholarship

**Wayne County Retired Teachers Association Endowed Scholarship**  
Lindsey Richard, Ashland University

**Waynedale High School Scholarship**  
Alexis Fisher, Ashland University

**WCSCC Student Scholarship**  
McKenzie Taylor, Bowling Green State University

**Carlos Weber Memorial Scholarship**  
Tatum Franczek, The Ohio State University -  
Agricultural Technical Institute

**Doug Wells Memorial Scholarship**  
Abby Schellin, The Ohio State University -  
Agricultural Technical Institute

**Roger and Marilyn Wells Scholarship**

Cole Hissong, *The College of Wooster*  
Devan Snyder, *Youngstown State University*

**Weltmer Academic Award**

Aaron Eicher, *Ohio Wesleyan University*

**Mabel N. Wenger Memorial Scholarship**

Alex Alger, *Ashland University*  
Sydney Augspurger, *Ohio Northern University*  
Seneca Doty, *Bowling Green State University*  
Cole Geiser, *Heidelberg University*  
Adam Manley, *Youngstown State University*

**Anne M. Wolf Memorial Scholarship**

Alyssa Allen, *Ohio University*

**Aharon Woodruff Scholarship**

Kayla Munsey, *Youngstown State University*

**Wooster High School Teacher Enrichment Fund**

Wooster City Schools awarded the following teachers with scholarships to pursue professional development programs: Rebekah Bell, Rachel Figliomeni, Tim Gallagher, Rich Lee, Ryan Smith, and Lydia Stasiowski

**Wooster Motor Ways Taylor Funk Memorial Scholarship**

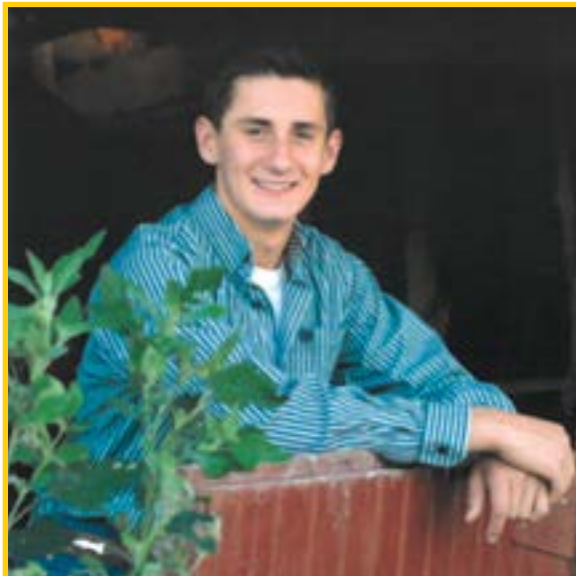
Rachel McCleary, *Wright State University*

**Wooster Noon Lions Club Scholarship**

Amber Swigart, *The Ohio State University*

**Wooster-Orrville NAACP Scholarship**

Traevon Alford, *The University of Akron*  
Zachery Ntia, *Oberlin College*  
Alexis Tillison, *University of Toledo*  
Amaya White, *The Ohio State University*



**Garrett Gwin, Dalton High School**

Recipient of Arden & Clarice Shisler Nationwide Insurance Scholarship, Wayne County 4-H General Scholarship, and Workman Family Scholarship

**Workman Family Scholarship**

Alex Alger, *Ashland University*  
Sydney Augspurger, *Ohio Northern University*  
Cortney Carathers, *Ashland University*  
Cole Geiser, *Heidelberg University*  
Garrett Gwin, *The Ohio State University - Agricultural Technical Institute*  
Emerson Hamsher, *Mount Vernon Nazarene University*  
Seth Hill, *The University of Akron - Wayne College*  
Nicole Martin, *The University of Akron*  
Morgan McCune, *University of Toledo*  
Kayla Munsey, *Youngstown State University*  
Matthew Stitt, *The Ohio State University*  
Madelyn Zaleski, *Kent State University*

**Henry Yablonski Scholarship**

Justine May, *The University of Akron*

**Helen Youngen Memorial Scholarship**

Olivia Rieman, *Ashland University*  
Morgan Sampsel, *Malone University*  
Taylor Sheppard, *Kent State University*  
Danielle Zimmerly, *Ashland University*

**Zarle Family Scholarship**

Austin Domer, *McHenry County College*  
Emily Landis, *Ohio Northern University*

---

**Scholarship Funds not presenting awards for the 2018-2019 academic year:**

**Julius Fejes Scholarship**

**Farmers National Bank Scholarship**

**Terry A. Gardner Music Scholarship**

**John Hodovan Scholarship**

**Lillian Long-P.E.O., Chapter AP, Scholarship**

**Alan L. Lyons - The Sky's the Limit - Memorial Scholarship**

**Sgt. Michael T. Maxwell Memorial Scholarship**

**Zody Miller Scholarship**

**Orrville Campus Foundation Fund**

**Huntley and Bea Pierce Family Sports Scholarship**

**Duane and Leonette Rowe Scholarship**

**Bruce V. Schantz Memorial Scholarship**

**Robert C. and Jean P. Seiwert Memorial Library Scholarship (new)**

**Sam Shapiro Scholarship Honoring Lisa and Don Drumm**

**Sprenger Health Care Scholarship**

**Brian Tarpley Scholarship (new)**

**Timothy Scholarship**

**Wooster High School Class of 1939 Scholarship**

---

# Our Grantees



**Orrville YMCA** received contributions to their natatorium capital campaign, an effort to upgrade lighting, install a new dehumidifier, and improve overall operational effectiveness. The natatorium is used by many community members, and offers swim lessons for children as young as 6 months old.

*On the following pages is a list of organizations that received grants from our discretionary, donor advised, agency, or designated funds. It is through the generosity of the many donors who established these funds that these grants are made.*

A Way-Out Recovery Solutions.....	\$2,500	Ashland University.....	\$1,050
AAC Institute.....	\$85,298	Asia's Hope.....	\$750
AAUW-Wooster Branch.....	\$50	Aultman Orrville Hospital.....	\$24,019
ACLU of Ohio Foundation.....	\$100	Baldwin Wallace University.....	\$1,000
The Ability Experience.....	\$250	Billy Graham Evangelistic Association.....	\$100
Adaptive Sports Program of Ohio.....	\$13,480	Boston Lyric Opera.....	\$5,000
AFT Disaster Relief Fund.....	\$5,000	Boy Scouts of America-Buckeye Council.....	\$750
Akron Art Museum.....	\$35,000	Boys and Girls Club of Wooster.....	\$19,275
Akron Children's Hospital Foundation.....	\$500	Breakaway Committee for Released Time for Christian Education Inc.....	\$500
Akron Community Foundation.....	\$10,000	Brooklyn Community Bail Fund.....	\$250
Akron-Canton Regional Foodbank.....	\$1,500	Buddhist Film Foundation.....	\$15,000
Al Otro Lado.....	\$1,000	Business Volunteer Unlimited.....	\$11,500
Alzheimer's Association.....	\$50	Canaan Lutheran Church.....	\$3,600
Alzheimer's Association National Office.....	\$250	Canaan Township/Wayne County.....	\$5,200
American Association of University Women Inc.....	\$300	Capital Area Humane Society.....	\$500
American Cancer Society.....	\$500	Care and Share Mentoring.....	\$3,350
American Heart Association.....	\$550	The Carter Center, Inc.....	\$200
American Policy Roundtable.....	\$100	Case Western Reserve University.....	\$203,725
American Red Cross.....	\$550	Catholic Charities Services / Wayne.....	\$478
American Red Cross-Wayne County.....	\$17,850	Catholic Charities USA.....	\$1,000
Amigos de las Americas, Ohio Chapter.....	\$500	Central American Medical Outreach, Inc.....	\$9,550
Apostolic Christian Children's Home Inc.....	\$5,000	Central Christian Church.....	\$2,345
Apostolic Christian Counseling and Family Services.....	\$5,000	Central Christian Schools.....	\$2,290
Apostolic Christian Home for the Handicapped.....	\$5,000	Children's Hospital Medical Center of Akron.....	\$846
Art House, Inc.....	\$15,500	Children's Miracle Network.....	\$250
Aruna Project.....	\$900	Chippewa High School.....	\$1,100
Ashbrook Center.....	\$700	Christian Children's Home of Ohio.....	\$9,563
Ashland Theological Seminary.....	\$2,000	Church at Carters Orchard.....	\$7,000



**Goodwill Industries of Wayne and Holmes Counties** provides clients with training to obtain employment so that they can gain a sense of self-sufficiency, pride, and accomplishment while decreasing their reliance on public assistance programs. While Goodwill's programs are designed to help all job seekers, the majority of participants report a disabling condition; a lack of literacy, high school equivalency (diploma or GED), or reliable transportation; a past criminal record, or a history of substance abuse.

City Club of Cleveland.....	\$100	Glasser Schoenbaum Human Services Center.....	\$100
City of Rittman.....	\$11,960	God's Tiny Angels Support Group.....	\$500
Cleveland Clinic.....	\$2,800	Goodwill Industries of Wayne and Holmes Counties Inc.....	\$15,000
Cleveland Clinic Foundation.....	\$4,000	Grace Church.....	\$32,430
Cleveland International Film Festival Inc.....	\$10,000	Grace Brethren Church of Homerville.....	\$500
The Cleveland Orchestra.....	\$9,300	Grand Valley State University.....	\$2,000
Coach Hall Foundation.....	\$1,000	Great Decisions of Wayne County, Inc.....	\$1,500
The College of Wooster.....	\$194,354	The Greater Wabash Foundation.....	\$1,000
College of Wooster Women's Advisory Board.....	\$1,150	Greater Yellowstone Coalition.....	\$2,000
Community Action Wayne / Holmes.....	\$2,000	Green Local School District.....	\$13,650
Community Bible Church.....	\$50	Habitat for Humanity of Wayne County.....	\$5,846
Congress Community Church.....	\$2,200	Haven of Rest Ministries.....	\$1,096
The Counseling Center of Wayne and Holmes Counties.....	\$2,000	Hazel Harvey Elementary School.....	\$430
County Line Historical Society of Wayne and Holmes Counties.....	\$3,250	Heartland Education Community, Inc.....	\$2,000
Creston Canaan UMC.....	\$250	Heritage Private School.....	\$5,000
Creston Community Service Club.....	\$1,000	Hillsdale College.....	\$50
The Culver Educational Foundation.....	\$375	Holmes County Education Foundation.....	\$48,361
Dalton High School.....	\$6,100	Hoover High School.....	\$1,000
Dalton Local Schools.....	\$66,500	Hope for Syria.....	\$1,000
DayBreak Community Church.....	\$192,500	Hospice of North Central Ohio, Inc.....	\$100
Depauw University.....	\$400	Human Rights Watch.....	\$9,000
Doctors Without Borders USA, Inc.....	\$17,700	Humane Borders.....	\$7,500
Doylestown Community Food Cupboard.....	\$8,000	Humane Society of Madison County.....	\$500
Dress for Success Worldwide.....	\$4,000	Huntingtons Disease Society of America, Inc.....	\$20,000
Earlham College.....	\$8,112	Ideastream.....	\$1,060
Epilepsy Foundation.....	\$922	Institute For Creation Research.....	\$50
Equality Florida Institute, Inc.....	\$250	The Interfaith Alliance of Colorado (TIA-CO).....	\$250
First Book.....	\$500	Jericho Amish Church.....	\$500
First Community Church.....	\$2,500	Jewish Vocational Service.....	\$500
First Descents.....	\$500	Joyful Enterprises, Inc.....	\$10,500
First Presbyterian Church.....	\$42,850	Junior Achievement of North Central Ohio, Inc.....	\$750
First United Methodist Church.....	\$8,000	Karen Wellington Memorial Foundation for Living with Breast Cancer.....	\$100
Focus on the Family.....	\$50	Kent State University Foundation, Inc.....	\$2,050
Food Bank for Larimer County.....	\$250	Lakeside Chautauqua Foundation.....	\$1,000
Friends of the Earth, DC.....	\$8,000	Liberty University.....	\$3,000
Friends of Wayne County Fair.....	\$17,458	LifeCare Hospice.....	\$6,250
Friends of Wooster Memorial Park.....	\$3,800	Life's Little Adventures Farm, Inc.....	\$2,000
Friendship Meals Inc.....	\$1,000	Little Eden Camp.....	\$500
Fund For Our Economic Future.....	\$33,000	Little Traverse Conservancy.....	\$500
Girls with Sole.....	\$500	Lodi Community Hospital.....	\$846
Givedirectly, Inc.....	\$5,000	Lodi Family Center, Inc.....	\$500



Main Street Wooster, Inc.....	\$26,221	Ohio Special Olympics.....	\$500
Mansfield-Richland County Public Library.....	\$50	The Ohio State University-ATI.....	\$14,500
Maragoli Community Development Foundation Inc.....	\$750	Ohio State University Alumni Association.....	\$500
Meals on Wheels of Stark & Wayne Counties.....	300	Ohio State University Foundation.....	\$2,700
The Metanoia Project.....	\$500	Ohio Wesleyan University.....	\$5,000
Methodist Theological School in Ohio.....	\$100	OHuddle.....	\$1,145
MetroHealth Foundation, Inc.....	\$500	OneEighty, Inc.....	\$12,000
The Millbrook School.....	\$5,000	Orlando Health Foundation.....	\$5,000
Miller Charitable Foundation.....	\$10,000	Orrville Area Boys & Girls Club.....	\$215,954
Milton Township/Wayne County.....	\$846	Orrville Area Development Foundation.....	\$60
Minna Anthony Common Nature Center.....	\$500	Orrville City Schools.....	\$5,979
Mission Possible A to Z.....	\$3,000	Orrville Historical Museum.....	\$9,337
Mohican Church of the Brethren.....	\$1,000	Orrville Public Library.....	\$7,000
Montessori Institute of North Texas.....	\$3,000	Orrville YMCA Inc.....	\$82,800
Montessori School of Wooster.....	\$11,300	Oxfam America.....	\$12,500
Moody Bible Institute of Chicago.....	\$100	Paradise Church of the Brethren.....	\$42,744
Mt. Eaton Care Center.....	\$3,296	Parent to Parent Organization, Inc.....	\$20,000
Mount Holyoke College.....	\$750	Parkersburg AMBUCS Chapter.....	\$1,000
Mount Vernon Nazarene University.....	\$1,000	Parks & Trails of New York.....	\$500
Mountain Area Land Trust.....	\$500	People to People Ministries.....	\$40,420
The Musical Theater Project.....	\$6,000	Plain City Presbyterian Church.....	\$500
NAMI Wayne and Holmes Counties.....	\$6,955	Planned Parenthood of Greater Ohio.....	\$10,000
National Immigration Law Center.....	\$1,500	Planned Parenthood of North Central Ohio.....	\$300
National Inventors Hall of Fame, Inc.....	\$11,000	Playhouse Square Foundation.....	\$1,200
National Right to Life Educational Foundation.....	\$50	Protection of Rights Alliance Foundation.....	\$2,500
National Women's Hall of Fame.....	\$500	Pura Vida Ministries.....	\$478
Natural Resources Defense Council.....	\$500	Quota International of Wooster.....	\$2,000
Nature Conservancy.....	\$300	Radford University.....	\$400
The Navigators.....	\$1,200	Rails to Trails of Wayne County.....	\$31,250
New Hope Conductive Learning Center, Inc.....	\$1,000	Really Recovered.....	\$15,000
New Pittsburg Fire & Rescue Association, Inc.....	\$250	The Reentry Initiative.....	\$1,000
New Pittsburg Fire Department.....	\$25	Replay For Kids.....	\$15,000
Nicaragua Initiative for Community Advancement.....	\$500	Reporters Without Borders.....	\$4,000
The Norman Rockwell Museum at Stockbridge, Inc.....	\$15,000	Rittman Exempted Village Schools.....	\$20,000
North Central & Northwestern Weekday.....	\$846	Rocky Mountain PBS.....	\$100
Northwestern High School.....	\$6,500	Ronald McDonald House of Akron.....	\$100
Northwestern Local School District.....	\$29,000	Rosedale Bible College.....	\$10,000
Norwayne High School.....	\$3,100	Rotary Foundation.....	\$1,100
Norwayne Local School District.....	\$53,346	SafeNet.....	\$500
Norwayne Music Supporters.....	\$6,200	St. Francis Nursing Center.....	\$1,000
Nuhop Center for Experiential Learning dba Camp Nuhop.....	\$39,100	St. James Episcopal Church.....	\$31,098
Ohio Foundation of Independent Colleges.....	\$300	St. John Lutheran Church (McZena).....	\$500
Ohio Northern University.....	\$1,000	St. John's Church of Millersburg.....	\$32,240
		St. Labre Indian School.....	\$200



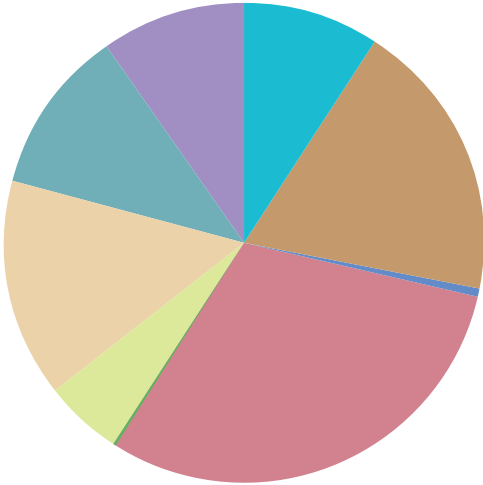
**Camp Nuhop** has provided Experiential Education Programs since 1974. It provides programs for children with special needs, residential outdoor education, professional development workshops for educators, teambuilding programs for schools and colleges, and corporate team development programs for organizations throughout the United States.



From new band instruments and science lab equipment to literacy projects and a school vegetable garden, donors utilized their Funds at the Foundation to enhance the education of students throughout the **Rittman Exempted Village School District**.

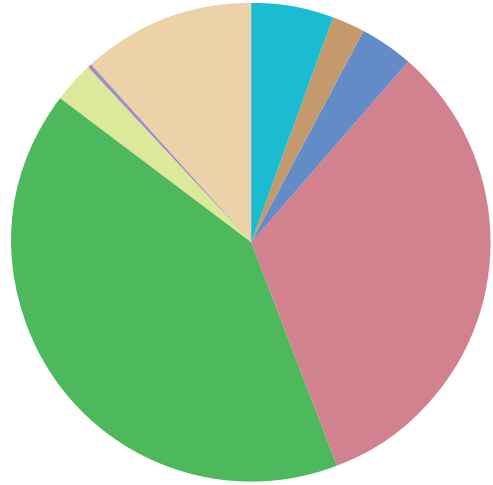
St. Mary of the Immaculate Conception Catholic Church.....	\$13,700	Viola Startzman Clinic.....	\$98,111
St. Mary School.....	\$56,000	Wadsworth All-Sports Booster Club.....	\$20,000
St. Paul Lutheran Church.....	\$348	Wadsworth Drug-Free Community Coalition.....	\$5,000
Salvation Army.....	\$16,256	Wadsworth-Rittman Hospital Foundation.....	\$846
Salvation Army Loveland.....	\$250	Wayne Center for the Arts.....	\$57,827
The Salvation Army-Orrville Service Center.....	\$1,000	Wayne College-The University of Akron.....	\$18,698
The Salvation Army Women's Auxiliary.....	\$250	Wayne County Board of Developmental Disabilities.....	\$5,633
Samaritans Purse.....	\$1,000	Wayne County Children Services.....	\$250
San Francisco Parks Alliance.....	\$500	Wayne County Committee for Crippled Children & Adults, Inc.....	\$10,150
Sarasota - Manatee Jewish Federation, Inc.....	\$10,000	Wayne County Farm Bureau.....	\$1,000
Schantz Makerspace, Inc.....	\$25,599	Wayne County Fire & Rescue Association.....	\$846
Security Life of Denver.....	\$10,000	Wayne County Historical Society of Ohio.....	\$34,410
Serving Women in Ghana.....	\$2,400	Wayne County Humane Society, Inc.....	\$9,275
Shreve United Methodist Church.....	\$3,300	Wayne County Public Library.....	\$34,795
Smithville Community Historical Society.....	\$6,496	Wayne County Regional Training Facility.....	\$571,107
Smithville High School.....	\$100	Wayne County Schools Career Center.....	\$31,302
Social Justice Fund Northwest.....	\$1,000	Wayne County Sustainable Energy Network Inc.....	\$1,000
South Harrison High School.....	\$1,500	Wayne Growth Partnership.....	\$5,500
South Street Ministries.....	\$500	Waynedale High School.....	\$330
Southeast Local School District.....	\$5,000	Western Reserve Land Conservancy.....	\$500
Southern Poverty Law Center.....	\$200	Westminster Presbyterian Church.....	\$78,500
Sterling United Methodist Church.....	\$846	Whits End Community Place, Inc.....	\$500
Trinity United Church of Christ.....	\$34,500	The Wilderness Center, Inc.....	\$21,678
Trinity United Methodist Church.....	\$12,250	Williams College.....	\$5,000
Triway Athletic Booster Club.....	\$1,050	Wittenberg University.....	\$5,000
Triway High School.....	\$1,000	Women's Committee for the Wooster Symphony Orchestra.....	\$2,312
Triway Junior High School.....	\$10,000	Wooster All Sports Booster Club.....	\$2,500
Triway Local School District.....	\$2,579	Wooster Arts Jazz Fest.....	\$500
Unitarian Universalist Fellowship of Wayne County.....	\$1,500	Wooster Christian School.....	\$500
United Church Board for Ministerial Assistance, Inc.....	\$15,000	Wooster City Schools.....	\$537,000
United Methodist Committee on Relief.....	\$500	Wooster Community Hospital.....	\$2,000
United Way of Wayne & Holmes Counties, Inc.....	\$57,200	Wooster High School.....	\$270
University Hospitals of Cleveland.....	\$10,000	Wooster High School All Sports Hall of Fame.....	\$350
The University of Chicago.....	\$5,000	Wooster High School Music Parents' Association.....	\$650
University of Cincinnati.....	\$2,000	Wooster Hope Center.....	\$19,000
Vanderbilt University Medical Center.....	\$1,000	Wooster Rotary Foundation.....	\$310
Victory Gallop Inc.....	\$500	Wooster Speech & Debate Parents, Inc.....	\$9,332
The Village Network.....	\$44,942	Wooster United Methodist Church.....	\$65,223
Village of Creston.....	\$1,000	World Vision.....	\$40
Village of Fredericksburg.....	\$4,739	YMCA of Wooster.....	\$23,785
Village of Smithville.....	\$3,700	Young Life of Wayne County.....	\$335

# Total Grants



## 1,060 Awarded Grants

■ Arts & Culture . . . . .	\$530,987
■ Civic & Community . . . . .	\$1,088,836
■ Conservation & Environment . . . . .	\$36,978
■ Education . . . . .	\$1,753,210
■ Gift Annuities . . . . .	\$7,053
■ Health & Wellness . . . . .	\$301,987
■ Human Services . . . . .	\$843,233
■ Religion . . . . .	\$644,018
■ Scholarships . . . . .	\$551,462
<b>Total . . . . .</b>	<b>\$5,757,764</b>



## Grants Awarded by Fund Type

■ Agency . . . . .	\$331,076
■ Administrative . . . . .	\$124,539
■ Community . . . . .	\$204,400
■ Designated . . . . .	\$1,894,020
■ Donor & Corporate Advised . . . . .	\$2,370,320
■ Field of Interest . . . . .	\$159,119
■ Gift Annuities . . . . .	\$7,053
■ Scholarship . . . . .	\$667,237
<b>Total . . . . .</b>	<b>\$5,757,764</b>

# Grants Application Guidelines

## Guidelines

The Foundation makes grants only to organizations that are recognized by the Internal Revenue Code as nonprofit, tax-exempt, charitable organizations including schools and churches; or to qualified governmental agencies. The Foundation does not make grants to individuals. All scholarship checks go to the schools where the student is enrolled.

Unrestricted donations to the Foundation are added to the General Fund. Along with other Community Funds, these gifts allow the Board of Trustees to respond to innovative projects and the changing needs of the community. Charitable organizations serving the residents of Wayne County, Ohio are invited to apply for grants through our competitive

grants process. Application deadlines are March 1 and September 1 each year. The Women’s Fund accepts grants applications once a year, with a deadline on September 1. The deadline for GIVE 365 grant applications is March 1. Nonprofit organizations serving Wayne County youth may also apply to the Youth Foundation by February 1 each year. To complete a grant proposal application, please visit **WayneCountyCommunityFoundation.org**.

*Thanks to the generosity of our donors, the Foundation distributed over \$5.7 million in grants and scholarships throughout Wayne County during the 2017-2018 fiscal year.*

# Legacy Society

## *Give to what matters... even 100 years from now.*

More than great wealth, philanthropy requires a generosity of spirit and the desire to improve the quality of life for others. When you remember your community, favorite cause or beloved nonprofit organization in your will, you support what you treasure, forever. You can tell us how you wish your gift to be used, or leave an unrestricted bequest that will tackle community problems as they emerge.

Even a modest bequest will grow, substantially, under our stewardship, within a few decades. At the same time, your generosity will generate ever-increasing grants to the cause or community you specify.

The Legacy Society recognizes individuals who have made plans to leave a gift to the community in partnership with the Foundation. This gift may be through estate plans, written wills, including the Foundation as a future beneficiary of a qualified retirement plan or IRA, insurance policy, remainder trust, Charitable Gift Annuity, or other similar planned gift.

We would like to acknowledge all those who have plans to leave a WCCF legacy to the community. Please talk with your professional advisors and us to find out how easy it is to leave a lasting mark on what matters to you.



*Stanley C. and Flo K. Gault (pictured above, c. 1986) were the moving force behind countless projects, programs, and scholarships that benefitted organizations and individuals in Wayne County and far beyond. Their extraordinary generosity and ability to engage and inspire others were unprecedented. It was important to both Stan and Flo that the support of organizations they cared deeply about continued after their passing. With careful planning, the couple was able to establish several Designated Funds at the Foundation through a bequest – enabling them to continue their support for Wayne County nonprofit organizations in perpetuity.*

## **We gratefully acknowledge the compassion, generosity and foresight of our Legacy Society members\*.**

Len and Ann Abrams  
Larry and Cindy Acker  
Carol and David M. Briggs  
James H. and Yvonne A. Brown  
Tom Bruch  
Bernard P. Buchholz  
Ken and Betty Craig  
Lowell E. Crilow  
Don and Nadine Foster  
Richard Gates  
Richard E. and Rilla E. Herald

Elizabeth and Bob Hooker  
Judy Kastelan  
Vern and Mary Ann King  
Linda R. Kline  
J. Eugene and Donna Devore Lowe  
Mimi Freedlander McCain  
Calvin and Beverly McCoy  
Lynn Moomaw  
Brenda Blaney Myers  
C. Burwell Myers, Jr.  
Thelma A. Myers

Sara L. Patton  
Robert and Kathleen Polsky  
Timothy and Jonell Ramsier  
Candace K. and Ferenc M. Relle, Jr.  
Bill and Mabel Rottman  
Stephen L. and Cheryl F. Shapiro  
Helen A. Sprowls  
Richard and Marguerite M. Wagner  
Mark and Irene Weaver  
Catherine and Stephen Webster

*\* Four members preferred to remain anonymous*

# Memorial Gifts

## *Mildred “Mickey” Workman* 1934-2017

The passing of Mildred “Mickey” Workman in October 2017 was a great loss to our community. Mickey touched many lives with her compassion for others, commitment to community, and personal generosity.

In 2001, Mickey began her service on the Wayne County Community Foundation’s Board of Trustees, filling the seat vacated upon the death of her husband, Gene. Her leadership was instrumental during a time of great growth. Upon retiring from the Board in 2007, Mickey was named Trustee Emerita and continued to be actively engaged with the Foundation.

Giving back to the community she loved so much brought Mickey great joy throughout her life. The spirit and generosity of Gene and Mickey live on through the ***Workman Family Community Grant Fund*** and the ***Workman Family Scholarship Fund***.



***In memory of Carolyn Abramson***

Mr. Leonard Abrams

***In memory of Peggy Albright***

Mr. and Mrs. Ferenc M. Relle Jr.

***In memory of Sharen B. Althoff***

Mr. and Mrs. Ferenc M. Relle Jr.  
Mr. and Mrs. M. Scot Smith

***In memory of Patricia Amstutz***

Mr. Sanford C. Amstutz

***In memory of Fred Bauer***

Mrs. Anita M. Greene

***In memory of Mathew Bauerle***

Friends in Colorado through Go Fund Me

***In memory of Alma Lenore Bowdle***

Dr. Charles A. Brown  
Mrs. Anita M. Greene  
Melanie Miller

***In memory of Ross Brazee***

Mr. and Mrs. Ferenc M. Relle Jr.

***In memory of Stephen Broda***

Denise and Marty Broda

***In memory of Don Buehler***

Mr. Leonard Abrams  
Mr. and Mrs. Adam Briggs  
Mr. and Mrs. Ferenc M. Relle Jr.  
Wayne Insurance Group

***In memory of Alfreda Campbell***

Mrs. Anita M. Greene

***In memory of Bobbi Campbell***

Mrs. Anita M. Greene

***In memory of Karen Canankamp***

Denise and Marty Broda

***In memory of Ruth Carothers***

West View Healthy Living

***In memory of Dean Chance***

Mr. Raymond Miller

***In memory of Jack Clampitt***

Mr. and Mrs. Ferenc M. Relle Jr.

***In memory of Eileen and Fred Colburn***

Mr. and Mrs. Mark Colburn  
Mr. and Mrs. David J. Smith

***In memory of Fred Colburn***

Mr. John Grogan and Family  
Mr. and Mrs. Larry Smucker  
Mr. Matthew J. Smucker  
Mr. and Mrs. Chad Welty

***In memory of Eileen C. Cross***

Mr. and Mrs. Ferenc M. Relle Jr.

***In memory of Wright Culbertson***

Mr. Erwin M. Kohler

***In memory of Dean Davis***

Mrs. Martha Ann Davis

***In memory of Guy and Jean Derr***

Ms. Melinda Derr

***In memory of Harold Downey***

Mrs. Anita M. Greene  
Mr. and Mrs. Thomas Lather  
Mr. and Mrs. Jim Lytle

***In memory of Donald R. Egbert***

Mr. Brian E. Krebs

***In memory of Brian Fenzl***

Jean Drummer

***In memory of Evan Fish***

Wooster All Sports Booster Club

***In memory of Julie Flanagan***

Teresa Garver

***In memory of Carla Matlack Fonte***

Jane Jewett and HRBP Colleagues  
Mr. and Mrs. Ferenc M. Relle Jr.

***In memory of Edith Frey***

Mrs. Anita M. Greene

***In memory of Flo K. Gault***

Mr. and Mrs. Al Mowrer

***In memory of Stanley C. Gault***

Mr. David Gallapoo  
Mr. and Mrs. Gary P. Hull  
Mr. and Mrs. Reginald S. Kramer  
Mr. and Mrs. Al Mowrer

*In memory of Cora Gigax*

Mr. and Mrs. Ferenc M. Relle Jr.

*In memory of Dorothy Ginther*

Grace L. Drake

*In memory of Cliff Greene*

Judge and Mrs. D. William Evans Jr.

*In memory of Jason Henthorne*

Apple Creek Banking Co.  
Shirley, Joel and Mark Beckler  
Mr. and Mrs. Peter Berend  
Mrs. Sally B. Bernhardt  
Ms. Margaret S. Blackburn  
Mr. and Mrs. Adam Briggs  
Mr. and Mrs. David Broehl  
Ms. C. Sue Brown  
Mr. and Mrs. Al Burger Jr.  
Mr. and Mrs. Harry R. Burke  
Mr. and Mrs. John Campbell  
Ms. Wanda Christopher-Finn  
Sallie and Roger Cook  
Mr. and Mrs. Andrew A. Cox  
Cutler Real Estate and Title One Agency  
Ms. Betty J. Dourlain  
Mr. and Mrs. Joseph Durbin  
Mr. and Mrs. Dick Elsasser  
Phyllis Forbes  
Janice and Anthony Gallagher  
The Gamper, Burger & Zdravchev Families  
Mr. and Mrs. Jack Gant  
The Gardner Sullivan Group  
R. W. Gasbarre & Associates, Inc.  
Mr. and Mrs. David Gedalecia  
Mr. and Mrs. Russell E. Gortner  
Dr. and Mrs. Thomas M. Graves  
Mrs. Anita M. Greene  
Mr. and Mrs. William J. Gribble  
Ms. Maggie-Carman Hamberger  
Ms. Dianne S. Hange  
Ms. Jacquelyn L. Harris  
Barbara Hays  
Mr. and Mrs. Randall Hesse  
Mr. Bob Hesser  
Mr. and Mrs. Charles Hetrick  
Robert and Elizabeth Hooker  
Dr. and Mrs. James H. Howard  
Jackson Oil, LLC  
Louise Walsh Keating  
Mr. and Mrs. Charles A. Kennedy  
Mr. and Mrs. Richard Kinder  
Mr. and Mrs. Jim Kirchofer  
Mr. Mark V. Kuntz  
Mr. and Mrs. Alfred Leist  
Mr. and Mrs. John J. Limbert  
Mr. John A. Lukanc  
Mr. and Mrs. John A. Lukanc  
Judy Mallonn  
Mr. and Mrs. Gary F. Mattison

Mr. and Mrs. Rancy McGlothlin  
Mr. and Mrs. Edward F. McKiernan  
Julie Mennes  
Mr. and Mrs. Leo J. Miller  
Mr. and Mrs. Michael D. Miller  
The Family at the NRA  
Ms. Veronica G. Ogden  
Mr. and Mrs. Norman H. Pylman  
Mr. and Mrs. Ferenc M. Relle Jr.  
Mr. and Mrs. Samuel Root  
St. Paul Hotel Management, LLC  
Mr. and Mrs. Paul J. Schlather  
Mr. and Mrs. F. Franz Schmidt  
Mr. and Mrs. James A. Schnell  
Mr. and Mrs. Steve Shapiro  
Mr. and Mrs. Larry Smucker  
Mr. and Mrs. Stephen B. Sullivan  
Mr. and Mrs. Hans D. Tannhof  
Sharon Taylor  
Mr. and Mrs. Andy Troutman  
University of Kentucky, Geology Alumni  
Advisory Board  
Marge Forbush and Mark Waggoner  
Wayne Insurance Group  
Judge and Mrs. Mark K. Wiest  
Harry and Kathryn Zink

*In memory of Jessie Hershey*

Mr. Jerry Amstutz  
Mr. and Mrs. James Davis Jr.  
Monday Golf Club

*In memory of Bertie Hesser*

Jana Hesser and Tim Davidson

*In memory of Lois Hochstetler*

Mr. and Mrs. Justin M. Hochstetler

*In memory of Lud Huck*

Mr. and Mrs. Adam Briggs  
Mrs. Margaret B. Huck  
Mr. and Mrs. David Marlar  
Jim and Ann Obrecht  
Mr. and Mrs. Ferenc M. Relle Jr.  
Ms. Mary Kay Rowekamp  
Tom and Barb Slabaugh

*In memory of Mark Kiper*

Anonymous

*In memory John K. Knoke*

Ms. Judith N. Sliter

*In memory of Lary Koch*

St. John Lutheran Church (McZena)

*In memory of Joey Leininger*

Mrs. Anita M. Greene

*In memory of Bonnie Logee*

Rudie Deweese and Family  
Mr. and Mrs. David B. Esterly

Mr. and Mrs. Alan D. Ivan, Sr.  
Mr. and Mrs. Ferenc M. Relle Jr.  
Judge Mark K. Wiest

*In memory of Robert and Cleo Lorentz*

Mrs. Cindy J. Hudson  
Carol Lorentz Slates

*In memory of Greg Lubelski*

Mr. and Mrs. Ferenc M. Relle Jr.

*In memory of Ruth MacKenzie*

Mr. and Mrs. Ferenc M. Relle Jr.

*In memory of Judy Mackey*

Jerry's Cafe

*In memory of Jean McConnell*

Mrs. Anita M. Greene

*In memory of Dorothy Meenan*

Jerry Amstutz

*In memory of Ann Musyt*

Karin Doerschlag  
Ms. Bertha A. Hoffman  
Mr. Andrew I. Klein  
Ms. Adeline Leatherman  
Mr. and Mrs. David Molchen  
Ms. Carolyn Overturf  
Mr. and Mrs. Mark E. Ransom  
Mr. and Mrs. Steven Rusher

*In memory of Sherlyn Myers*

BDO USA, LLP  
Ms. Sandra Beaver  
Mr. Richard A. Bond  
Mr. and Mrs. Clinton Carr  
Ms. Sue A. Decapua  
Meyer Hatchery  
Rhode Island Red Club of America  
Ms. Martha J. Scaggs, Gloria D. Johnson  
and Donald B. Johnson  
Mr. and Mrs. Adam Shank  
Mr. and Mrs. James Tegtmeier  
Mr. and Mrs. Terry W. Wertz

*In memory of Rick Ogden*

Mr. and Mrs. Jay G. Henthorne Jr.

*In memory of Louise Plusquellec*

Mr. and Mrs. Ferenc M. Relle Jr.

*In memory of Stan Puster*

Ms. Emily Spencer

*In memory of Dr. JT Questel*

Mrs. Anita M. Greene

*In memory of Helen Questel*

Mrs. Anita M. Greene

***In memory of Carolyn Rasmussen***

Mr. and Mrs. David M. Briggs  
Mr. and Mrs. Steve Matthew  
Mr. Doug R. Taylor

***In memory of Joe Retzler***

Ms. Wanda Christopher-Finn  
Mr. and Mrs. Ferenc M. Relle Jr.

***In memory of Mary E. Robison***

Mrs. Anita M. Greene

***In memory of Rodney Royer***

Jerry Amstutz  
Ms. Peggy Baringer  
Mr. and Mrs. Paul P. Fischer Jr.  
Mr. and Mrs. David A. Fischnich  
Habrun's Insurance Service, Inc.  
Mark Horn  
Nancy A. Hranko and children  
The Kidron Auction, Inc.  
Lowe & Young, Inc.  
Mr. Ronald Mizer  
Ms. Sandra S. Pipes  
Mr. and Mrs. Jonas Troyer

***In memory of Paul Seifried***

The Monday Golf Group

***In memory of Robert and Jean Seiwert***

Mr. and Mrs. Robert C. Seiwert II

***In memory of Sam Shapiro***

Mr. and Mrs. Steve Matthew  
Mr. and Mrs. Ferenc M. Relle Jr.

***In memory of The John and Esther  
Shearer Family***

Mr. and Mrs. Greg Church

***In memory of Karl and Mildred Shearer***

Mr. Jeff Shearer

***In memory of Berton Scott Sheppard***

Mr. and Mrs. John Ladrach  
Ms. Patricia Purdy

***In memory of Dale Shingleton***

Mrs. Anita M. Greene

***In memory of Mike Sigler***

Mr. and Mrs. Donald F. Sigler

***In memory of Bruce Smith***

Mr. and Mrs. Ferenc M. Relle Jr.

***In memory of Larry Smith***

Jean Auer  
Mr. Eric A. Barkdull  
Mr. and Mrs. Alan W. Biglin  
Mr. and Mrs. David J. Fox  
Mr. and Mrs. Hershel Horn

Mr. and Mrs. Stanley R. Ingram  
Kelly J. Lincoln

Mr. and Mrs. Roger D. Manns  
Mr. and Mrs. Alan Pasqualini  
The Perry Family  
Mr. and Mrs. Michael W. Smith  
Ms. Linda Wills

***In memory of Geoffrey D. Smucker***

Mrs. Linda S. Oggel  
Mr. and Mrs. Larry Smucker  
Ms. Patricia M. Smucker  
Mr. and Mrs. John F. Steiner

***In memory of Tyson Snyder***

Mrs. Anita M. Greene

***In memory of Bob Thompson***

Ms. Nancy J. Thompson

***In memory of Robert and Kathryn  
Thompson***

Ms. Susan C. Corwin  
Ms. Nancy J. Thompson

***In memory of Coach Tom Todaro***

Mr. Jon Detrow

***In memory of Bill Vogt***

Karla J. Vogt

***In memory of John Wiandt***

Catherine Wiandt

***In memory of Mildred C. Workman***

Mr. and Mrs. Dennis F. Adcock  
Mr. Jerry Amstutz  
Mike and Guinn Bandy  
Ms. Mary E. Bartlett  
Mr. and Mrs. Mark L. Berg  
Mr. and Mrs. Don Bilderback  
Ms. Judith J. Bridger  
Mr. and Mrs. David M. Briggs  
Mr. and Mrs. Don Buren  
Mr. and Mrs. Bob Carpenter  
Mr. and Mrs. Tony Carpenter  
Mr. and Mrs. James Curtis  
Cutler Real Estate and Title One Agency  
Mr. and Mrs. James J. Danner  
Mr. and Mrs. Don Dreher  
Anna Marie Eberts and Family  
Mr. and Mrs. Dave Fishnich  
Ms. Caroline M. Garvey  
Mr. and Mrs. Jason Geiser  
Mr. and Mrs. James L. Gerber  
Davida Hamsher  
Ms. Shirley Haudenschild  
Ms. Janice M. Heter  
Mr. and Mrs. Richard C. Hodge  
Mr. and Mrs. John Hofstetter

Mr. and Mrs. Ronald R. Kiefer  
Mrs. Mary Ann King  
Mr. and Mr. Wayne King  
Mr. and Mrs. Stanley F. Krawson  
Mr. and Mrs. Rudy Lohff  
Ms. Brenda Long  
Mr. and Mrs. Brian Miller  
Mr. Chuck Oberlin

Jim and Ann Obrecht  
Ms. Sara L. Patton  
Inge B. Peters  
Mr. and Mrs. Ferenc M. Relle Jr.  
Mrs. Beverly A. Richardson  
Mr. and Mrs. Ron Schaaf  
Tom and Barb Slabaugh  
Mr. and Mrs. Harold E. Slusser  
The J. M. Smucker Company  
Mr. Herbert E. Snyder  
Mr. and Mrs. Rod Steiger  
Mr. and Mrs. Jim Taggart  
Ms. Janice E. Taylor  
Ms. Bonnie J. Thompson  
Co-workers of Carol Tufano  
WCCF Board of Trustees  
Kristen Zabell  
Mr. and Mrs. Paul Zink

***In memory of Chuck Yehl***

Ms. Melinda Bates, Michelle Budd,  
Matt and Rachel Budd  
Mr. and Mrs. Murray K. Brunton  
Cindy Budd  
Ms. Michelle Budd  
Mr. and Mrs. Mike Budd  
Mr. and Mrs. Charles Hurst  
Mr. and Mrs. Thomas J. Peshek  
Mr. and Mrs. Richard S. Western, Jr.  
Mr. and Mrs. David Yonto

# Wayne County Community Youth Foundation



## *Philanthropists in the making.*

Wayne County Community Youth Foundation (WCCYF) wrapped up its fifth year in May with the graduation of 42 students representing 10 area high schools. Under the advisement of Ferenc M. Relle, Jr., WCCYF gives local young people a voice in providing financial and human resources to projects and programs benefitting youth in Wayne County. Members meet monthly during the academic year. They work on teambuilding and leadership activities, learn about charitable giving from local philanthropists, and visit nonprofit organizations serving Wayne County. After reviewing grant applications this year, members voted to distribute over \$7,500 in grants to youth-oriented projects and programs.

In addition to financial support, members of the Youth Foundation also participated in several community service projects. Members volunteered at the County Line Trail Rainbow Run in Creston, did landscaping and various maintenance projects for Viola Startzman Clinic in Wooster, and refinished a deck for Central American Medial Outreach (CAMO) in Orrville.

Relle was assisted by past Youth Foundation participants Justin Ebert and Amber Swigart, who led discussions and served as peer mentors to current members.

## 2017-2018 Wayne County Youth Foundation Members



**Ferenc M. Relle, Jr.**  
Youth Foundation Advisor

Emma Anderson, Wooster  
Weslea Arthur, Northwestern  
Tyler Ault, Norwayne  
Trent Boatner, Northwestern  
Hannah Farnsworth, Dalton  
Alexis Florence, Wooster  
Timothy Fritts, Wooster  
Zoe Galehouse, Chippewa  
John Gorman, Wooster  
Shadra Hamsher, Orrville  
Clay Harvey, Norwayne  
Chloe Hunt, Orrville  
Chloe Johnson, Orrville  
Elizabeth Kanzeg,  
Northwestern

Lindsay Kastner, Wooster  
Maddie Keener, Smithville  
Ashley Kinnaird, Orrville  
Stuart Kirkbride, Kingsway  
Lance Larrison, Norwayne  
Kara Leatherman, Rittman  
Briar Lehman, Dalton  
Rena Loverink, Rittman  
Anna Martin, Northwestern  
Jaida McCloud, Wooster  
Tyler McFarren, Orrville  
Jett Morgan, Wooster  
Alyssa Naftzger, Wooster  
Lexi Nolletti, Wooster

Benjamin Otto, Wooster  
Elizabeth Perkins, Wooster  
Ben Pollizi, Northwestern  
Colby Reinhart, Norwayne  
Kalie Relle, Central Christian  
Carly Rowland, Smithville  
Carlie Schlatter, Norwayne  
Braden Smith, Smithville  
Gregory Smith, Smithville  
Ada Speegle, Chippewa  
Maccoy Stika, Norwayne  
Connor Stuart, Rittman  
Gina Van Lieu, Wooster  
Olivia Wakefield, Northwestern

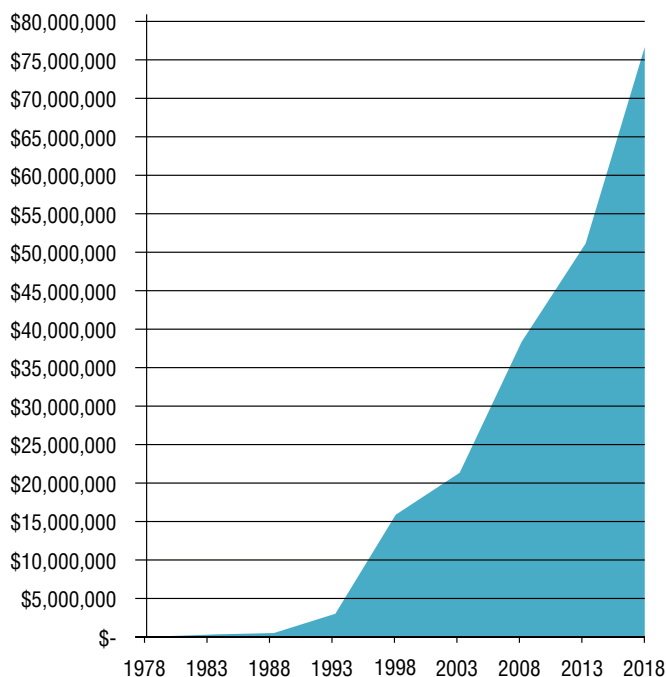


# Financial Stewardship

The goal of the Foundation’s investment program is to preserve and enhance the value of donor gifts, build capital for the future, and meet community needs today. To accomplish these ends, we maintain a diversified portfolio overseen by multiple managers.

## Asset Growth

Asset growth is achieved through the receipt of new gifts and bequests, gaining positive net returns on our investments, and ensuring that our stream of grant awards does not exceed our available resources. As of June 30, 2018, the Foundation’s assets exceeded \$77 million for the first time. This increase in the Foundation’s assets over the years since 1978 is detailed in the graph below. At fiscal year-end, total assets were \$77.2 million (as detailed in the Financial Statements portion of this Annual Report). In addition, we added more than \$14 million in new gifts for the Foundation, including over \$7 million in *permanent* assets, during the 2017-2018 fiscal year.



## Investment Returns

Overall, our fiscal year ending June 30, 2018 resulted in an investment gain of 6.8%. This result is slightly above our target goal of 6.5% nominal return. The return rate is net of all investment and banking fees, except for WCCF’s administrative fee (ranging from 0.5% to 1.0%, depending on type and/or size of the Fund). Below are the Foundation’s investment returns over one, two, and five year periods.

1 Year	2 Years	5 Years
6.8%	9.1%	6%

## Asset Allocation

A diverse portfolio is fundamental to WCCF’s investment strategy, which aims to maximize investment returns while reducing volatility. The Investment Committee of the Board of Trustees, chaired by J. C. Johnston III, regularly reviews the asset allocation strategy.

Asset Type	Target	Tolerance Range
US Large Cap Equities	25%	15% - 30%
US Mid Cap Equities	5%	0% - 10%
US Small Cap Equities	5%	0% - 10%
International Equities	20%	10% - 30%
Alternative Investments	15%	10% - 25%
Fixed Income & Cash	30%	20% - 40%
<b>Total 100%</b>		

## Investment Committee

The Foundation’s Investment Committee is comprised of individuals with financial experience who establish policy, hire investment managers, and evaluate performance. In turn, the Investment Committee is advised by independent investment consultants, Hartland & Co. of Cleveland, with regard to all aspects of the Foundation’s investment portfolio. After a year-long process, the Foundation has transitioned to The Commercial & Savings Bank and Fidelity Investments for banking and custody services.

## 2017-2018 Members

J.C. Johnston III, Chair	Howard Wenger
Marlene Barkheimer	Ronald Holtman, <i>Trustee Emeritus</i>
Mike Jarrett	Sara Patton, <i>Ex-officio</i>
Steve Matthew	
Brent Steiner	

# Consolidated Statement of Financial Position

Year Ended June 30

<b>ASSETS</b>	<b>2018</b>	<b>2017</b>
<b>Current Assets:</b>		
Cash and cash equivalents	\$ 14,847	\$ 20,555
Investments:		
Assets in investment pool	75,484,539	62,352,716
Assets in real property	447,000	7,430
Assets in non-pooled investments	-	981,920
	<u>75,931,539</u>	<u>63,342,066</u>
Contributions and pledges receivable - current portion	332,002	424,477
<b>TOTAL CURRENT ASSETS</b>	<b>76,278,388</b>	<b>63,787,098</b>
<b>Property and Equipment:</b>		
Furniture and equipment	63,875	63,875
Less allowance for depreciation	(58,308)	(58,308)
<b>TOTAL PROPERTY AND EQUIPMENT</b>	<b>5,567</b>	<b>5,567</b>
<b>Other Assets:</b>		
Long-term contributions and pledges receivable		
- net of current portion	717,581	499,229
Insurance policies - cash value	266,583	254,207
<b>TOTAL OTHER ASSETS</b>	<b>984,164</b>	<b>753,436</b>
<b>TOTAL ASSETS</b>	<b>\$ 77,268,119</b>	<b>\$ 64,546,101</b>
<b>LIABILITIES</b>		
<b>Current Liabilities:</b>		
Agency fund liability	\$ 11,353,800	\$ 9,507,128
Grants payable	5,500	113,200
Scholarships payable	567,500	573,000
Gift annuity obligation - current portion	6,641	8,291
	<u>11,933,441</u>	<u>10,201,619</u>
Long-term gift annuity obligation		
- net of current portion	28,172	42,516
<b>TOTAL LIABILITIES</b>	<b>11,961,613</b>	<b>10,244,135</b>
<b>NET ASSETS</b>		
Unrestricted	7,122,796	6,266,450
Temporarily restricted	20,401,759	17,654,002
Permanently restricted	37,781,951	30,381,514
<b>TOTAL NET ASSETS</b>	<b>65,306,506</b>	<b>54,301,966</b>
<b>TOTAL LIABILITIES AND NET ASSETS</b>	<b>\$ 77,268,119</b>	<b>\$ 64,546,101</b>

This Consolidated Statement of Financial Position was taken from our audited financial statement prepared by Dyer Roche & Company Inc. Copies of the complete audited financial statements are available from the Wayne County Community Foundation, 517 North Market Street, Wooster, OH. 44691.

# Consolidated Statement of Activities and Changes in Net Assets

Year Ended June 30

				2018
	Unrestricted	Temporarily Restricted	Permanently Restricted	Total
<b>SUPPORT AND REVENUE</b>				
Contributions	\$ 2,440,006	\$ 4,292,446	\$ 6,517,902	<b>\$ 13,250,354</b>
Investment income (loss)	817,159	2,018,347	732,912	<b>3,568,418</b>
Change in value of gift annuity	-	8,941	-	<b>8,941</b>
Other income	20,960	12,376	21,672	<b>55,008</b>
Total Contributions, Investment, and Other Income	3,278,125	6,332,110	7,272,486	<b>16,882,721</b>
<b>Other Changes in Net Assets:</b>				
Transfers of fund activity	(115,377)	(12,574)	127,951	-
Satisfaction of donor and program requirements in accordance with spending policy	3,143,082	(3,143,082)	-	-
Released for administrative fees	428,697	(428,697)	-	-
Total Other Changes in Net Assets	3,456,402	(3,584,353)	127,951	-
Total Support and Revenue	6,734,527	2,747,757	7,400,437	<b>16,882,721</b>
<b>EXPENSES</b>				
Grants and scholarships	5,387,226	-	-	<b>5,387,226</b>
Investment fees and general expenses	443,446	-	-	<b>443,446</b>
Development and communications	47,509	-	-	<b>47,509</b>
Total Expenses	5,878,181	-	-	<b>5,878,181</b>
<b>CHANGE IN NET ASSETS</b>	856,346	2,747,757	7,400,437	<b>11,004,540</b>
<b>NET ASSETS - Beginning of year</b>	6,266,450	17,654,002	30,381,514	<b>54,301,966</b>
<b>NET ASSETS - End of year</b>	<b>\$ 7,122,796</b>	<b>\$ 20,401,759</b>	<b>\$ 37,781,951</b>	<b>\$ 65,306,506</b>

This Consolidated Statement of Activities and Changes in Net Assets was taken from our audited financial statement prepared by Dyer Roche & Company Inc. Copies of the complete audited financial statements are available from the Wayne County Community Foundation, 517 North Market Street, Wooster, OH 44691.



# Celebrating Our Donors

## A

AAGROZZ, LLC  
AAUW -- Wooster Branch  
Mr. and Mrs. John P. Abele  
John J. Abt  
Mr. and Mrs. Larry Acker  
Lisa L. A. Acker  
Mr. Theodore Adams  
Ms. Betty Jane Agnew, Trustee  
Mr. Michael D. Agnoni  
Patricia Alioto  
All Creatures Inc.  
Mr. and Mrs. Scott Allen  
Herbert Allshouse  
Mr. Alan J. Amstutz  
Robert N. and Linda Nussbaum  
Amstutz  
Ms. Patricia L. Anderson  
Mr. William D. Anderson  
Anonymous (13)  
Apple Creek Banking Co.  
Apple Creek Historical Society  
Apple Creek Volunteer Fire &  
Rescue Squad  
Lisa K. Armstrong  
Artfind Tile  
Artiflex Manufacturing, LLC  
Ms. Meredith Asleson  
Auble Funeral Home  
Mr. and Mrs. Mark Auble  
David and Phyllis Augenstein  
Mr. Tyler S. Ault  
Mr. and Mrs. Jason Ayers

## B

Mr. and Mrs. Gary Baerenklau  
Alice Bahmer  
Mr. and Mrs. Charles Baker  
Dr. Craig A. Balloon D.D.S.  
Dr. and Mrs. Wayne Bare  
Mr. Donald S. Barlow  
Mr. and Mrs. Orlando T. Barnett  
Joyce Barrett  
Kristina Barton  
Mr. John Batchelder  
Mrs. Sharon Battig  
Gita and William Bauerle Jr.

Mr. and Mrs. Terry W. Bauman  
Lucy Baus  
Mr. and Mrs. Emil W. Baxstrom II  
Mr. Donald G. Beane  
Chuck Beck  
Shirley Beckler  
Mr. and Mrs. William L. Behrend  
E. Jane Bender  
Mr. and Mrs. David A. Benfield  
Mr. and Mrs. Jerry W. Berg  
Keith and Deb Berner  
Richard and Shari Berner  
Roberta K. Berner  
Mr. and Mrs. Jon M. Bernhardt  
Mrs. Sally B. Bernhardt  
Dr. and Mrs. Anthony Biggio  
Barbara E. Biro  
Mr. and Mrs. David J. Blakley  
William J. and Marilyn L. Blanchard  
W. Lee Blosser Estate  
Mr. and Mrs. Dennis J. Blough  
Blue Spruce Boutique, Ltd.  
Mr. Robert E. Bodager  
Mr. and Mrs. Dennis Boen  
Ted and Ann Bogner  
Mr. and Mrs. David P. Bolas  
Kathi Bond  
Dr. Dana and Mr. Frank J.  
Bonezzi Family  
Booster, LLC  
Boreman, Norton, Cook Wealth  
Partners  
Mr. and Mrs. Ronald J. Borton  
Dr. and Mrs. Robert A. Bouchard  
Alma Lenore Bowdle Irrevocable Trust  
Kay Bowen  
Blair A. Bower, Attorney  
Sheryl D. Bowers  
Mr. and Mrs. William H. Bowers  
Ms. Eleanor J. Boyd  
Mr. and Mrs. Charles H. Brain  
Mr. and Mrs. Joseph Bransky  
Mayor and Mrs. Robert F. Breneman  
Ms. Mary L. Bricker  
Judith Stitzlein Bridger  
Briggs Financial Group  
Mr. and Mrs. Adam Briggs

Mr. and Mrs. David M. Briggs  
Mr. Robert W. Briggs  
Mrs. Susan Curie Briss  
Denise Broda  
David and Margo Broehl  
Mr. and Mrs. Dana W. Brooks  
Ms. Carolyn M. Brown  
Mr. Bob A. Bruce  
Mr. Gregory Brun  
Mr. Christopher Buchanan  
Buchholz Brothers  
Mr. and Mrs. Andrew Buchholz  
Susan A. Buchwalter  
BCI Buckeye Division  
Buckeye Container  
Buckeye Oil Producing Company  
Mr. and Mrs. Daniel A. Buehler  
Mr. and Mrs. Donald W. Buehler  
Mr. and Mrs. Greg Buehler  
Mrs. Joan Buehler  
Mr. and Mrs. Robert A. Buehler  
Mr. and Mrs. Roger Buehler  
Mr. and Mrs. Scott Buehler  
Buehler's Fresh Foods  
Mr. and Mrs. Don Buren  
Dr. Everett C. Burgess, Jr.  
Mr. Jeffrey R. Burgett  
Mr. and Mrs. William T. Burkey  
Mr. and Mrs. William H. Burky, Sr.  
Maribeth Burns  
Monica S. Burrill  
Burton D. Morgan Foundation  
Judy Butler

## C

Mr. and Mrs. Daniel Calhoun  
Mr. and Mrs. Matt Call  
Mr. and Mrs. Sidney F. Cammer  
Campbell Construction  
John and Mary Lou Campbell  
Canaan Lutheran Church  
Mr. and Mrs. Fred Cannon  
Ms. Jill Carmichael  
Patricia Carmony  
Dr. and Mrs. Robert Cebul  
Josephine Cermely  
Certified Angus Beef LLC

Charles Chapman  
Mr. and Mrs. Rick Cherney  
Mr. and Mrs. David Christopher  
Ms. Wanda Christopher-Finn  
Mr. and Mrs. Greg Church  
Mr. and Mrs. Thomas P. Cihha  
City of Wooster  
The City Square Steakhouse, LLC  
Ms. Barbara Ciuca  
Mrs. Charlotte Clampitt  
Gary Clark  
Mr. and Mrs. Larry Clark  
Cleveland Road Animal Hospital, Inc.  
Chuck and Amy Cline  
Ms. Susan Clyde  
Mr. and Mrs. James Clyde  
CMS & Co. Management  
Services Inc.  
Mr. and Mrs. Barry C. Cochran  
Mr. and Mrs. Parry S. Cochran  
Parry and Susie Cochran Family  
Mr. and Mrs. Robert W. Coffy  
The College of Wooster  
Mr. Gordon Collins  
Commercial & Savings Bank  
Congress Community Church  
Consumers National Bank  
Mr. and Mrs. John P. Cook  
Dan and Mary Cooper  
Mary F. Cornelius  
Ms. Joyce Cotton  
The Counseling Center of Wayne  
and Holmes Counties  
Ms. Diane K. Covert  
Mr. and Mrs. Clyde Crabtree  
Mr. and Mrs. Jack Crafton  
Mr. Clyde Cramer and Mrs.  
Carolyn S. Hodge-Cramer  
Mr. and Mrs. Randall S. Crawford  
Dr. and Mrs. Rollin Crawford  
Critchfield, Critchfield & Johnston, Ltd.  
Ms. Carol R. Cropp  
Marian T. Cropp  
Dr. and Mrs. Paul Crowley  
Mr. Charles Cureton  
Cutter's Hair Studio & Spa

**D**

D + S Distribution, Inc.  
 The Dalton Family Charitable Lead  
 Annuity Trust  
 Pam Dalton  
 Mrs. Dorcas Dalton  
 Mr. and Mrs. Gene Danner  
 Mr. Matthew Darling  
 Christine L. Davis  
 Mr. and Mrs. Dennis P. Davis  
 Christine L. Davis  
 Mr. Bret Defibaugh  
 Mr. William DeHaan  
 Judy Delaney  
 Mr. and Mrs. Mark DelPropost  
 Dr. and Mrs. Donald Demkee  
 Ms. Barbara J. Denman  
 Lynne DePaulo  
 Marjorie J. Deppe  
 Mr. William DeRodes  
 Mr. Jon Detrow  
 Keith and Joyce Dewitz  
 Dicor Corporation  
 Mr. and Mrs. James A. Ditzler  
 Mr. and Mrs. Andrew Dix  
 Mr. and Mrs. Charles W. Dixon  
 Mr. and Mrs. Gregory Donohoe  
 Mr. and Mrs. Andrei A. Dordea  
 Mr. and Mrs. Jason J. Dossi  
 Bobbi Douglas  
 Roger Downer and Jane Cooper  
 Mrs. Nita Downey  
 Drink on Market, Inc.  
 Ms. Catherine A. Dupuy  
 Delores Durbin  
 Ms. Jo Ann Dye  
 Jolene Dyer  
 Mr. and Mrs. Richard Dyer

**E**

Mr. Edward K. Eberhart  
 Richard and Cynthia Edington  
 Mr. and Mrs. Edward Eisbrenner  
 Carol Elliott  
 Mr. and Mrs. Michael A. Ellis  
 Beth Entsminger  
 E-Pak Manufacturing, LLC  
 EQT Foundation  
 Mr. and Mrs. Jeffrey C. Esterburg  
 Judge and Mrs. D. William Evans, Jr.  
 Expert T's  
 Mr. and Mrs. John C. Eyre

**F**

Facility Outsource Group  
 Mr. and Mrs. William Fairhurst  
 Family Eye Care of Wooster  
 Farmers State Bank  
 Mr. and Mrs. Glenn E. Fath Jr.  
 Doug and Peg Fawcett  
 Ms. Jayne L. Feathers  
 Annette Fejes  
 Mr. and Mrs. Richard C. Figge  
 Mr. and Mrs. David Findley  
 Mr. John P. Finn  
 M. L. Finney Family  
 Joan Firmin  
 First-Knox National Bank

Winifred M. Fitzgerald  
 Ms. Linda Fleming  
 Carolyn A. Foradori  
 Mrs. R. Eileen Fox  
 Mr. Brian Franczek  
 Mr. and Mrs. Jeffrey Frank  
 Mr. John V. Frank  
 John V. Frank Fund for Pomfret Area  
 of Greater Worcester Community  
 Foundation  
 Ms. Jeanie Frank  
 Ronald Frantz  
 Mr. and Mrs. John C. Fravel  
 Fredericksburg Memorial Post #651  
 Kathryn G. Freed  
 Freeman Building Systems  
 Mr. and Mrs. Josh Frichtl  
 Laura B. Frick Charitable Trust  
 Mr. and Mrs. W. Scott Friedhoff  
 Mr. and Mrs. Alan S. Fritts  
 Mrs. Norma J. Fry  
 Sharon Funk  
 Pastor John Furno

**G**

Janice M. Gallagher, PH.D  
 Kimberly Ann Gallatin  
 Suzanne S. Galloway  
 Mr. and Mrs. Stefan J. Garcia  
 Melanie Garcia  
 Ron and Leslie Garst  
 R. W. Gasbarre & Associates, Inc.  
 Mr. Jeff Gasser  
 Brent Gates  
 Ms. Carol M. Gates  
 Flo K. Gault Marital Trust  
 Stanley C. Gault Trust  
 Mr. Stephen C. Gault  
 Madonna Gaus  
 Ms. Betty Geitgey  
 Linda Gelsinger  
 The GE Foundation  
 General Rent-All, Inc.  
 Mr. and Mrs. James L. Gerber  
 Mr. and Mrs. David J. Giffen  
 Mr. Mark Gifford and Mrs. Anita  
 Journey-Gifford  
 Mr. and Mrs. Roy Gingery  
 Ms. Joan M. Giuffreda  
 John and Kathleen Glasgow  
 Ms. Jacquie Glendinning  
 Mr. and Mrs. Dick Glessner  
 Ruth Glessner  
 Cheryl A. Goff  
 GoJo Industries, Inc.  
 Gold Star Holdings, LLC  
 The Gooch Family  
 Mr. and Mrs. Clair B. Good  
 Pamela Goodell  
 Mr. and Mrs. George D. Goodman  
 Gayle Gorman Green  
 Mr. and Mrs. Robert C. Gorman  
 Ms. Karen S. Goshen  
 Gary and Tammy Graf  
 Brandon and Rebecca Graham  
 Mr. and Mrs. Robert G. Gralinski  
 Dr. and Mrs. Thomas M. Graves  
 Mr. and Mrs. Joel Gray  
 Mr. and Mrs. John R. Gray  
 Great Lakes Dental Arts  
 Great Shake, LLC  
 Mrs. Anita M. Greene  
 Mr. and Mrs. Richard Greenham  
 Rick Gregorich  
 Dr. and Mrs. Eric R. Grimes  
 Ron and Janie Grosjean  
 Gross Brothers Plumbing and  
 Heating, Inc.

**H**

Mr. and Mrs. John A. Haggerty  
 Ms. Kimberly L. Hall  
 Mr. and Mrs. Michael Hamill  
 Martha Hancock  
 Ms. Dianne S. Hange  
 Hard Hat Restaurant, LLC  
 Jeff Harmon  
 Pat Hartel  
 Mr. and Mrs. Jonathan W. Harvey  
 Kristine S. Hawke  
 Mac Hawkins  
 Dr. and Mrs. Leroy Haynes  
 Mrs. Barbara Hays  
 Heartland Education Community, Inc.  
 Hebrews 13:2 Inc.  
 Rick and Terri Heffelfinger  
 Heffelfinger's Meats, Inc.  
 Barbara Helmecy  
 Drs. Dennis and Kathryn Helmuth  
 Joi E. Hemphill  
 Mr. and Mrs. Gary Hendershot  
 Mary Beth Henthorne  
 Richard Herald  
 Mr. and Mrs. Terry Hershberger  
 Mr. and Mrs. Charles E. Hess  
 Jana Hesser and Tim Davidson  
 Mr. and Mrs. J. David Higby III  
 Mr. and Mrs. Theodore K. Hobert, Jr.  
 Mr. Harold J. Hochstetler  
 Mr. Marion Hochstetler  
 Ms. Peggy A. Hockett  
 Mr. and Mrs. Ralph S. Hodgdon  
 Mr. and Mrs. Richard C. Hodge  
 Scott Hoffman  
 Ms. Kathryn Holmes  
 Mr. and Mrs. Ronald E. Holtman  
 Homer Yost Agency  
 Mr. and Mrs. Robert Hooker  
 Ms. Tara M. Hootman  
 Stan & Cindy Hoover  
 Myra E. Horn and Beth Lustig  
 Lindsay A. Horst and Jason Storck  
 Cheryl L. Hostetler  
 Laura Jane Hostetler  
 Mr. and Mrs. Paul A. Hotz  
 Tonya R. Houser  
 Linda Houston  
 Mr. Hugh Howard  
 Dr. and Mrs. James H. Howard  
 Ms. Jennifer P. Howell  
 Mr. and Mrs. Lud A. Huck  
 Margo Wilson Huff and Larry Huff  
 Mr. and Mrs. Gary P. Hull  
 Hummel Group Insurance Agency, Inc.  
 Mr. and Mrs. Charles Hurst  
 Jack and Ardenna Hurt

Bob and Sue Hutson  
 Sarah J. Hysmith

**I**

Jonathan Iten

**J**

Jackson Oil, LLC  
 Dr. Daral and Renee Jackwood  
 Jacobson Mfg., LLC  
 Mike and Diane Jarrett  
 Janet Lucas Jarvis  
 Mr. and Mrs. Jim Jicha  
 Jiovanazzo Insurance & Financial  
 Services, Inc.  
 Joe's Garage & Son, Inc.  
 Dale and Coburn Johnson  
 Ms. Elisabeth A. Johnson  
 Mr. and Mrs. Charles Johnston Jr.  
 Mr. Charles Johnston  
 Mr. and Mrs. J. C. Johnston III  
 Dr. Amy Jolliff  
 Ken and Sherri Jones  
 Ralph R. & Grace B. Jones Foundation  
 Dottie Jordan  
 Ms. Martha Junkin

**K**

Mary Sue Kaliszewski and  
 Bill Cassarly  
 Ms. Mary Kallio  
 Mr. and Mrs. Jack R. Kane  
 Robert C. Kapper, Morgon J. Bobot  
 and Shelby J. Bobot  
 Rick and Janet Karley  
 Mr. and Mrs. Jay F. Kaufman  
 Dr. and Mrs. Walter Kearney  
 Louise Walsh Keating  
 Donna J. Keener  
 Mr. and Mrs. Tyler Keener  
 Denise Kelley  
 Dr. Joel A. Kennedy  
 Mr. and Mrs. Ronald Kennedy  
 Mr. Nick Kesslering  
 Mary Ellen Ketter  
 The Kidron Auction, Inc.  
 Dr. Alan Kiefer DDS  
 Dick & Roberta Kinder  
 Richard Kinney Family  
 Mr. and Mrs. Wayne R. Kinsey  
 Mr. and Mrs. Charles R. Kiper  
 Cheryl and John Kirkbride  
 Mr. and Mrs. Matthew D. Kleinhenz  
 Joey L. Kline  
 Mr. and Mrs. Donald A. Klise  
 Mr. and Mrs. William S. Knapic  
 Elizabeth Knepp  
 Knights of Columbus  
 Mr. and Mrs. Richard B. Koehler  
 Kenneth and Catherine Kolovich  
 Mariana Kotouch  
 Mr. and Mrs. Reginald S. Kramer  
 Judy and John Kropf  
 Phil and Bonnie Krueger  
 Mr. Matthew R. Kwiatkowski and  
 Ms. Jessica L. Moulin

**L**

Karen and Daniel Lacey  
 Mr. and Mrs. David Lackey  
 Carol and John Ladrach  
 Mr. and Mrs. Richard M. Landis  
 The Landscape-Herr  
 Mr. and Mrs. Thomas W. Lange  
 Mr. James J. Lanham  
 Terry Lanker  
 Mr. Brett Lanz  
 Dr. Rebecca Lauffenburger  
 Mr. Thomas N. Layland  
 Mr. and Mrs. Joe Lee  
 Mr. David L. Lehman  
 Lehman Ervin Family Fund at the  
 Mennonite Foundation  
 Mr. Jay E. Lehman  
 Cliff and Ginny Leighty  
 Florence Leiner  
 Lettergraphics Sign Company  
 Dick and Mimi Lewellen  
 Mr. and Mrs. P. Elliott Liggett  
 Mr. and Mrs. Guy D. Lilley Jr.  
 Mr. Tom Linebaugh  
 Linn Enterprises  
 Brenda and Sam Linnick  
 Joseph Linz  
 The Locksmith Shop, LLC  
 Dr. and Mrs. Joseph E. Loewenstein  
 Mrs. Bonnie L. Logee  
 Mr. and Mrs. Greg A. Long  
 Mr. Matthew Long and  
 Lynette Mattson  
 Nick and Amber Long  
 The Looking Glass Eyecare  
 Professionals, LLC  
 Mr. and Mrs. Cliff F. Loreth  
 Mr. and Mrs. Patrick Lorson  
 Dr. Jack Love  
 Mr. and Mrs. Rick Lowe  
 Mr. Ted A. Lutton  
 Mr. & Mrs. Patrick T. and Elizabeth  
 Seifried Luzio  
 Mr. and Mrs. Tom Lynch  
 Mr. and Mrs. Jim Lytle

**M**

MacKenzie's Silver Lining  
 Mairs Veterinary Hospital, Inc.  
 Dona Majka  
 The Major Mary Concierge  
 Company, Ltd.  
 Judy Mallonn  
 Mr. Charles Malta and Kathy Gallo  
 Cameron Maneese  
 Mr. Michael Mann  
 Mrs. Amy Marinello  
 Mr. and Mrs. Mike Mariola  
 Mr. and Mrs. Philip Mariola  
 Mr. Vincent P. Mariola  
 Market Street Inn  
 Mr. and Mrs. David Marlar  
 John E. Martin  
 Mr. and Mrs. Arun Masih  
 Capt. Robert E. Massie  
 USMC-Retired  
 Darryl and Alice Mast  
 Mr. and Mrs. Jason L. Mast

Mr. and Mrs. Fred Mathis  
 Dr. and Mrs. Arun Mathur  
 Dr. and Mrs. James I. Matia  
 Mr. and Mrs. Steve Matthew  
 Ron & Jan Maxwell and Team  
 Max 436  
 Mr. Bruce B. Mays  
 Ms. Jennifer McAdams  
 Mr. Kevin McAllister  
 Mrs. Beverly McCoy  
 Mr. and Mrs. Matthew Kim  
 McCullough  
 Mr. and Mrs. R. A. McFalls  
 Mr. and Mrs. Ronald W. McFarlin  
 Mike and Robin McFarren  
 MCTV  
 McZena St. Johns WELCA  
 Ms. Jean M. Meacham  
 Mr. John Meenan  
 Michael and Virginia Meenan  
 Tim Mendiola  
 Julie Mennes  
 Mr. and Mrs. Guy D. Messner  
 Nancy Metzger  
 Mr. and Mrs. Dennis A. Meyer  
 Mr. and Mrs. Gene Meyers  
 Mr. Frederick C. Michel  
 Mr. and Mrs. James S. Middleton  
 Patricia Miles  
 Mr. Allan J. Milewski, D.D.S., Inc.  
 Mr. and Mrs. Alan Miller  
 Mr. Carson Miller  
 Mr. and Mrs. Clyde E. Miller  
 Mrs. Connie L. Miller  
 Mr. Earl Miller  
 Mr. and Mrs. Gary L. Miller  
 Dr. John K. Miller  
 Dr. Louise A. Miller  
 Michael E. Miller D.D.S.  
 Dr. and Mrs. Rodney Miller  
 Stu and Margaret Miller  
 Mr. and Mrs. John D. Milliken  
 Mr. and Mrs. J. Stuart Mitchell  
 Mr. and Mrs. Ross M. Mitchell  
 Mohammed and Afsar Moinuddin  
 Ms. Lynn R. Moomaw  
 Barbara Moore  
 Becky Moore  
 Mr. and Mrs. William G. Moore  
 Deborah Morrow  
 Sallie Morton  
 Mr. and Mrs. Michael Moser  
 Larry Moses, PHD  
 Deb Mosier  
 Mr. and Mrs. Eric Moskowitz  
 Mr. and Mrs. Al Mowrer  
 Annetta June Mueller  
 Forest and Georgia Muir  
 Marjorie Mulhollan  
 Murr Printing & Graphics

**N**

NAMI Wayne and Holmes Counties  
 Letty and Skip Nault  
 Capt. Robert E. Naumoff  
 Lacie Neal  
 Sarah Neely  
 Mr. James C. Newman

Ms. Laurel Newman  
 Norma G. Newman  
 Mr. and Mrs. Patrick Neyhart  
 Sandy and Steve Nichols  
 Nick Amster Workshop Inc.  
 Dr. and Mrs. Alexandros Nicolozakes  
 Mr. and Mrs. Richard Niemiec  
 Noble Foundation  
 Gayle Noble  
 Mady Noble and Tim Breiner  
 Penelope Nolan  
 Sandy Noletti  
 Barbara D. Norris  
 Northwestern Alumni & Friends  
 Association  
 Northwestern Ruritans  
 Mr. and Mrs. Mark C. Norton  
 Nancy T. Norton  
 Ms. Corinne Nussbaum  
 Mr. Kenneth L. Nussbaum  
 Mary Lou and Ken Nuzum

**O**

Mr. Gordon L. Ober  
 Jim and Ann Obrecht  
 Mr. and Mrs. Robert O'Brien  
 Brigid O'Connor  
 Gerarda O'Donnell  
 The Oehlenschlager Family  
 Verna J. Oehlenschlager  
 Ohio State University Extension,  
 Wayne County  
 Mr. and Mrs. John Olive  
 Michael Ollier and Anne-Marie Savoie  
 Mr. Dan Oloughlin  
 Omaha Bob's Barbeque  
 Ambassador John Ong  
 Jim and Beth Opatrny  
 Mr. Daniel O'Rourke and Denise  
 Bostdorff  
 Ms. JoAnne J. Orr  
 Orrville Area Development Foundation  
 Orrville Elementary School  
 Orrville Firefighters Assoc., Inc.  
 Orthodontic Specialists of  
 Wooster, Inc.  
 Mr. and Mrs. Randall M. Oscarson  
 Cheryl Oswald  
 The Ozar Family

**P**

Deb and Jerry Packard  
 Pallotta Ford Inc.  
 Bill and Lee Patterson  
 Ms. Ellen K. Patterson  
 Gene Patterson  
 Sara L. Patton  
 Mr. and Mrs. Daniel Pavuk  
 Ms. Charlene I. Payne  
 Murr Printing & Graphics  
 Mr. Henry A. Pearce III and  
 Mrs. Melissa Lazich Pearce  
 Dorothy J. Pearson  
 Anthony Pendolino  
 Dr. Jeffrey W. Perkins and  
 Dr. Mary Stockton  
 Walter and Hazel Perry  
 Virginia Pett

Mr. and Mrs. Timothy Pettorini Sr.  
 Pine Tree Barn & Farms  
 Jeff Pinkham  
 Mr. Daniel H. Plumly  
 The Ports Foundation  
 Mr. and Mrs. Max Powrie  
 Premier Promotions  
 Prentke Romich Company  
 Mr. Harvey Preslan  
 Linda Alexander Prochazka  
 Mr. Roger D. Proper, Jr.  
 Mr. and Mrs. Vaughn W. Puster  
 Mr. and Mrs. Christopher Pycraft  
 Jim and Pam Pyers  
 Mr. and Mrs. James B. Pyers

**R**

Mr. Frederick W. Raab  
 Ramsier Financial Services, Inc.  
 Richard and Sherry Ransom  
 Judith Ratzel  
 Rawhide Fire Hose, LLC  
 Kenneth F. Raynor  
 RBB Systems, Inc.  
 Ms. Cheryl L. Redfern  
 Mr. and Mrs. Mark U. Reichlin  
 Lori Reinbolt  
 Mr. and Mrs. Ron Reinking  
 Gwen Reiser  
 Relin Distributing, Inc.  
 Mr. and Mrs. Ferenc M. Relle Jr.  
 Dr. and Mrs. Ferenc N. Relle DDS  
 Mr. David A. Renner  
 Ted and Penny Renner  
 Mr. and Mrs. Denny Reusser  
 Bob and Nikki Reynolds  
 Mr. and Mrs. Craig R. Reynolds  
 Ms. Maryclare Reynolds  
 Ms. Myrtle C. Reynolds  
 Estate of Florence L. Rice  
 Richard Law Office, LLC  
 Tom and Pat Richard  
 Mr. and Mrs. Dennis O. Rinehart  
 Dr. and Mrs. Gregory Roadruck  
 Jarad and Jean Roberts  
 James and Joan Robertson  
 Mr. and Mrs. William Robertson  
 Ms. Carolyn F. Robinson  
 Jeff and Cathy Roche  
 Mr. Allan K. Rodd  
 Ms. Joyce Roe  
 Mr. and Mrs. Thomas M. Roelant  
 Tom and Cathy Rolf  
 Mr. Barry Romich  
 Mr. and Mrs. Jon R. Rose  
 Mr. and Mrs. Dwight Roseler  
 Mr. and Mrs. William F. Ross  
 Mr. and Mrs. Robert Rote  
 Mr. and Mrs. Charles Rotuno  
 and family  
 Ms. Marilyn Rowdybush  
 Tom and Lisa Rumbaugh  
 Mr. and Mrs. Scott Rutledge  
 Eva Ryckman

**S**

S. E. Burke, LLC DBA Gionino's Pizzeria  
 St. John Lutheran Church (McZena)  
 St. Paul Hotel Management, LLC  
 St. Paul Lutheran Church of Smithville  
 Mr. and Mrs. Freddy S. Salazar  
 Mr. and Mrs. Darrell Jeff Sanders  
 Jeff and Monique Sanders  
 Santmyer Oil Company, Inc.  
 Mr. Irvin D. Saurers, Jr.  
 Mr. and Mrs. Edward L. Schaaf  
 Susan Schaffter  
 Mr. and Mrs. William T. Schafrath  
 Bob and Laurie Schang  
 Carol Scheuffer  
 Mr. Dennis J. Schirripa  
 Steve and Cathy Schmid  
 Alison and Troy Schmidt  
 Mr. and Mrs. F. Franz Schmidt  
 Mr. and Mrs. John K. Schmidt  
 Mike and Peggy Schmitz  
 Mr. Gary J. Schopfer  
 Melissa Schrock  
 Betty K. Schuler  
 Mr. William R. Schultz, Jr.  
 Les Schumacher  
 Seaman Corporation  
 The Seaman Family Foundation  
 Judy Seaman  
 Ms. Marie Septer  
 Elena M. and Alex Serna-Wallender  
 Dr. Kenneth E. Shafer  
 Mr. David L. Shallenberger  
 Mr. Steve Shapiro  
 Barbara M. Sharp  
 Ms. Maxine C. Shelley  
 Mr. and Mrs. Bill Sheron  
 Sherwood Memorial Gardens  
 Ms. Katherine M. Shields  
 Ms. Mary Etta Shilling  
 Frances G. Shoolroy Family Foundation  
 Ms. Dora Mae Short  
 Mr. and Mrs. David Shrader  
 Mildred Shriver  
 Jim and Debbie Sidle  
 Mr. and Mrs. Paul Sigler  
 Jim and Linda Silver  
 Mr. and Mrs. Steven Silverman  
 Lee A. Simpson  
 Mr. and Mrs. Duane Singer  
 Dean & Carol Slates Family  
 Rick & Sandi Sloan  
 Mr. Ryan S. Sloan  
 Mr. and Mrs. Thomas A. Smailes  
 Smetzer's Tire Center, Inc.  
 Mr. and Mrs. Barth J. Smith  
 Mr. and Mrs. Jeffrey E. Smith  
 Jim and Sheryl Smith  
 Pauline Smith  
 Mr. and Mrs. Robert U. Smith  
 Sonny and Betty Smith  
 SmithFoods  
 Mr. and Mrs. Larry Smucker  
 Mr. Ralph Smucker  
 Mr. and Mrs. Tim Smucker  
 Mrs. Janet Snoddy

Mr. Jack R. Snowbarger  
 Melody Lawrence Snure  
 Mr. Randall D. Snure  
 Elaine Smith Snyder Trust  
 Mr. Gary Snyder  
 Jim and Dottie Snyder  
 Jan Sohar  
 Sonia Solomonoff  
 Mr. and Mrs. John Somogy  
 Mr. David Spector  
 Jodi Speece  
 Mr. and Mrs. Thomas Spittler  
 JEJOPA Investments LTD  
 Mr. and Mrs. John Sprunger  
 Julianne Buss Squier  
 Staley Technologies  
 Mr. and Mrs. Daniel Staniszewski  
 Mr. and Mrs. Adam Starr  
 State of Ohio  
 Greg and Char Steffen  
 Mr. and Mrs. Lowell Steinbrenner  
 Mr. and Mrs. Brent Steiner  
 Mr. and Mrs. Carlton Steiner  
 Jane and Eddie Steiner  
 Mr. and Mrs. Michael S. Steiner  
 Ron Steiner  
 Vern Steiner  
 Sue Steingass  
 Mrs. BettyRene Steinmetz  
 Mr. Brian Stephenson  
 Ms. Virginia L. Stephenson  
 Stepping Stones Mothers League  
 Mr. Brian E. Stevens  
 Tracy Stevens  
 Mr. and Mrs. Parker Stone  
 James Straub  
 Lucille Strauss  
 Mary Alice Streeter  
 Mr. and Mrs. John R. Strine  
 Mr. and Mrs. Eric D. Strouse  
 Mr. Doug Stuart  
 Mr. James Sturgeon  
 Mr. Matthew J. Sturgeon  
 Mr. and Mrs. William J. Sturgeon  
 Chip Styer and Sally Miller  
 Mr. and Mrs. Grady S. Suggs, Sr.  
 Mr. and Mrs. Paul J. Supan  
 Sustainable Foods, Inc.  
 Mickey (Mel) Swartz  
 Ms. Aileen Sweeney  
 Mr. and Mrs. Louis F. Szabo

**T**

Mr. Leslie Gordon Tait  
 Mr. Steven A. Tanner  
 Ms. Amber N. Tapp  
 Taylor Agency  
 Mr. and Mrs. Dave Taylor  
 Mr. and Mrs. H. Douglas Teague  
 Dr. and Mrs. Michael Tefs  
 Don and Neva Tegtmeier  
 Jim and Jeanne Tegtmeier  
 Dr. and Mrs. John W. Thomas  
 Michael Thomas MD  
 Ms. Abigail Thompson  
 Ms. Barbara Thompson  
 Thrivent Choice Program Thrivent Financial for Lutherans

Timken Foundation of Canton  
 Mrs. Kathryn Tomko  
 Mr. Blinn E. Tracey  
 Treasurer of Wayne County, Ohio  
 Kevin and Marcia Trent  
 Jim and Norma Trotter  
 Troutman Vineyards Inc.  
 Andy and Deanna Troutman  
 Mr. and Mrs. David Tschantz  
 TWY Enterprises, LLC

**U**

Drs. Terrence and Diane Uber  
 Mr. and Mrs. Carl Udell  
 Ms. Karen L. Udell  
 Mr. and Mrs. John A. Ulmer  
 United Titanium, Inc.

**V**

Mr. and Mrs. Dee V. Vaidya  
 Mr. and Mrs. Donald Van Cleef  
 Jane Vanfossen  
 Mr. Bala Venkataraman  
 Mr. and Mrs. John P. Vimmerstedt  
 Vicki Vitallo  
 Mr. and Mrs. Fred M. Vizzo

**W**

WQKT / WKVX  
 Mr. Daniel Waggoner  
 Mr. and Mrs. Richard S. Wagner  
 Ms. Susan Sommer-Wagner  
 W. Daniel Waldron  
 Mr. and Mrs. Clint E. Walenciak  
 Richard and Alicia Wallace  
 Mr. and Mrs. John Waltman  
 Ms. Christina J. Walton  
 Mr. David Waltz  
 Donna Warner  
 Wayne Area Human Resource Association  
 Wayne Automotive Group, LLC  
 Wayne County Agricultural Society  
 Wayne County Common Good  
 Wayne County Farm Bureau  
 Wayne County Historical Society  
 Wayne County Junior Fair Sale  
 Wayne County Republican Executive Committee  
 Wayne County Underwater Search & Rescue  
 Wayne Insurance Group  
 Wayne Savings Community Bank  
 Weaver Custom Homes, Inc.  
 Jim and Cindy Webster  
 Mr. and Mrs. Jim Weckesser  
 Ms. Kisa E. Weeman  
 Welker Family Revocable Living Trust  
 Bob and Mary Ann Wellington  
 Mrs. Janet Welty  
 Wenger Companies  
 Wenger Excavating, Inc.  
 Ms. Sandra K. Wenger  
 The Wereley-LoGiudice Family  
 Ms. Megan E. Wereley  
 Mr. and Mrs. Richard Wereley  
 West View Healthy Living  
 West View Manor Auxiliary  
 Western Reserve Group  
 Ms. Betsy Westlake  
 Westminster Presbyterian Church  
 Ms. Sandra K. Wharton  
 Tom and Connie Wheeler  
 Whitaker-Myers Group  
 Jane Anne White  
 Mr. Larry A. White  
 Ronald G. and Sally A. Whitman  
 Mary Wicks  
 Mr. and Mrs. Richard Wierwille  
 David Wiesenberg  
 Mr. and Mrs. Scott D. Wiley  
 Mr. and Mrs. David J. Wilkin  
 Willard E. Smucker Foundation  
 Ms. Nancy L. Williams  
 Mr. and Mrs. Tom Williams  
 Mr. and Mrs. Bill Winkler  
 Bob Winkler and Elaine Koch  
 Mr. and Mrs. Frank Wolf  
 Mr. and Mrs. Herbert Wolf  
 Mr. and Mrs. Jason Wolfe  
 Mr. and Mrs. Ken Wolny  
 Women's Committee of the Wooster Symphony Orchestra  
 Sam and Lila Woods  
 Wooster All Sports Booster Club  
 Wooster Appliance Center  
 The Wooster Brush Company  
 Wooster City Schools  
 Wooster Community Hospital  
 Wooster Food Tours, LLC  
 Wooster Friends of the Wayne County Public Library  
 Wooster Glass Company, Inc.  
 Wooster Hydrostatics, Inc.  
 Wooster Marketing Co. Pink Tomato Creative  
 Wooster Motor Ways, Inc.  
 Wooster Motor Ways Logistics, Inc.  
 Wooster-Orrville NAACP #3208  
 Wooster Rotary Foundation  
 Wooster Swim Club Boosters, Inc.  
 Wooster Township Fire & Rescue Association  
 Wooster United Methodist Church  
 Mr. and Mrs. Michael Workman  
 Mildred Workman

**Y**

Ms. Nina Yarnell  
 Jay and Bonnie Yenne  
 YMCA of Wooster  
 Mr. and Mrs. Titus Yoder  
 Mrs. Gloria Yoh  
 Ms. Elizabeth A. Young  
 The Young Revocable Living Trust  
 Ty Young

**Z**

Roger and Joan Zanny  
 Jon and Sue Zerrer  
 Jeanette Ziegler  
 Richard and Nancy Zimmerman  
 Mr. and Mrs. John Zivick  
 Zoller Consulting, Inc.  
 Mr. James Zook

# Board of Trustees

for Fiscal Year Ended June 30, 2018



Steve Matthew  
President



Mark A. Auble  
Vice President



Brent R. Steiner  
Secretary



Mary Alice Streeter  
Treasurer



Michael D. Agnoni  
Doylestown/Rittman



Marlene Barkheimer  
NW Quarter



Adam A. Briggs  
At Large - West



Maribeth Burns  
At Large - East



W. Michael Jarrett  
Orrville



J.C. Johnston III  
Wooster



Cheryl Kirkbride  
Orrville



Glenda Lehman Ervin  
SE Quarter



Dr. Larry Markley  
Doylestown/Rittman



Roger D. Proper, Jr.  
Wooster



William J. Robertson  
Doylestown/Rittman



Deanna Troutman  
SW Quarter



Bala Venkataraman  
Wooster



Howard J. Wenger  
SE Quarter



# Trustees Emeriti



David M. Briggs



Don Buren



James L. Gerber



Ronald E. Holtman



Richard S. Wagner

## Incorporators

Sue Crawford  
Robert Critchfield  
Robert C. Seiwert

## Founding Board of Trustees

William B. Baer  
Carl H. Bradford, Jr.  
George M. Breneman  
Al J. Broadhurst  
Robert Critchfield  
Robert F. Gumz  
Paul Maibach  
Neal F. Maurer  
A. Louise McCoy  
Leonard E. Schnell  
Robert C. Seiwert,  
Trustee Emeritus  
Ivan Steiner, Jr.  
Robert K. Stellwagon  
Donald E. Stepfield  
Richard S. Wagner,  
Trustee Emeritus

## Past Members of the Board of Trustees

Martha Baer  
G. Martin Breneman  
David M. Briggs,  
Trustee Emeritus  
Don Buren,  
Trustee Emeritus  
William J. DeRodes  
James L. Gerber,  
Trustee Emeritus  
Ronald E. Holtman,  
Trustee Emeritus  
Don G. Houglan  
Joseph Jacob  
Harvey Johnson  
Steven Johnson  
William D. Landers  
Fred Maibach  
Jack K. Miller  
Donald E. Noble  
William R. Schultz  
Stephen L. Shapiro  
Jody Smith  
Jenny Smucker  
Robert D. Snyder  
James Stebbins  
Rod Steiger  
Lillian Steiner  
Philip S. Swope  
Gene Workman  
Mildred C. Workman,  
Trustee Emerita

# Staff



Sara L. Patton  
Executive Director



Lacie M. Neal  
Program Manager



Barb Slabaugh  
Executive Assistant



Penny Gasbarre  
Administrative Assistant

## Accounting Firm

Meaden & Moore Ltd.

## Auditor

Dyer Roche & Company, Inc.

## Investment Consultant

Hartland & Co.

## Custodial Managers

The Commercial & Savings Bank

Fidelity Investments

## Investment Managers

Brookfield Global Listed Real Estate I

Credit Suisse Floating RT High Inc. Instl

Diamond Hill Long/Short Fund

Federated Total Return Bond Instl

Harbor International Instl

Harding Loevner Instl Emerging Markets

John Hancock Global Absolute Return I

JP Morgan Strategic Income Opps Sel

Oppenheimer International Growth Y

Prudential Total Return Bond Z

Transamerica Emerging Markets Debt I

Transamerica International Equity I

Vanguard Institutional Index

Vanguard Mid Cap Index Adm

Victory Integrity Small Value Y

Victory RS Small Cap Growth Y

Wells Fargo Adv Absolute Return Instl

## WCCF Memberships



Confirmed in Compliance with  
National Standards for U.S.  
Community Foundations.

Annual Report design by Hugon Art & Design; printing by Wooster Color Point, Inc.

Front and back cover photos of Oak Hill Park by Jennifer McMullen

Interior cover photos, front and back, of Secret Arboretum and Rails to Trails photo (page 17)  
by Grace E. Jones Photography





*Wayne County*  
**COMMUNITY FOUNDATION**  
SHARING YOUR LIFE WITH SOMEONE YOU MAY NEVER MEET®

517 North Market Street  
Wooster, OH 44691  
Telephone: 330-262-3877  
Fax: 330-262-8057  
Email: [wccf@sssnet.com](mailto:wccf@sssnet.com)

[WayneCountyCommunityFoundation.org](http://WayneCountyCommunityFoundation.org)